



**ELECTRONIC COPY**

LG788628227  
Report verification at igi.org



May 6, 2026

IGI Report Number **LG788628227**

Description **LABORATORY GROWN DIAMOND**

Shape and Cutting Style **PRINCESS CUT**

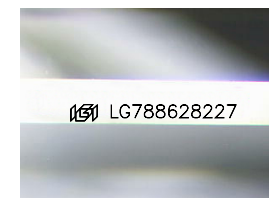
Measurements **7.45 X 7.05 X 5.31 MM**

**GRADING RESULTS**

Carat Weight **2.52 CARATS**

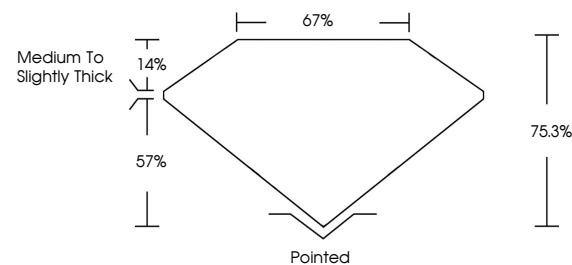
Color Grade **E**

Clarity Grade **VVS 1**

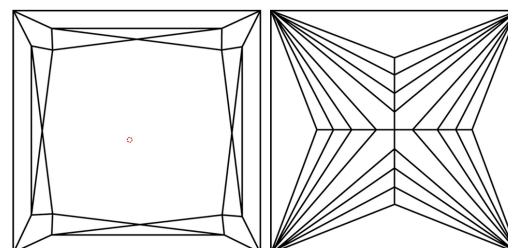


Sample Image Used

**PROPORTIONS**



**CLARITY CHARACTERISTICS**



**KEY TO SYMBOLS**

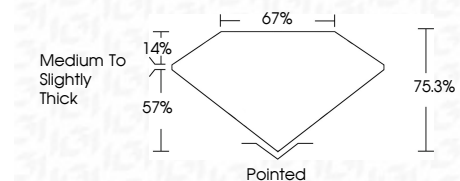
Red symbols indicate internal characteristics.  
Green symbols indicate external characteristics.

**COLOR**

D E F G H I J Faint Very Light Light

**CLARITY**

FL	IF	VVS <sup>1-2</sup>	VS <sup>1-2</sup>	SI <sup>1-2</sup>	I <sup>1-3</sup>
Flawless	Internally Flawless	Very Very Slightly Included	Very Slightly Included	Slightly Included	Included



**ADDITIONAL GRADING INFORMATION**

Polish **EXCELLENT**

Symmetry **EXCELLENT**

Fluorescence **NONE**

Inscription(s) **IGI LG788628227**

Comments: This Laboratory Grown Diamond was created by Chemical Vapor Deposition (CVD) growth process. Type IIa



**IGI**



May 6, 2026  
IGI Report No. LG788628227  
**PRINCESS CUT**

**7.45 X 7.05 X 5.31 MM**

**2.52 CARATS**

Carat Weight **E**

Color Grade **VVS 1**

Clarity Grade **75.3%**

Table **67%**

Depth **Medium to Slightly Thick**

Girdle **Pointed**

Culet **EXCELLENT**

Polish **EXCELLENT**

Symmetry **EXCELLENT**

Fluorescence **NONE**

Inscription(s) **IGI LG788628227**

Comments: This Laboratory Grown Diamond was created by Chemical Vapor Deposition (CVD) growth process. Type IIa