



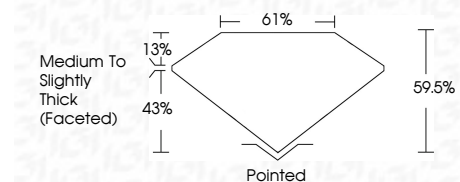
ELECTRONIC COPY

LG788627766 Report verification at igi.org



April 17, 2026 IGI Report Number LG788627766 Description LABORATORY GROWN DIAMOND Shape and Cutting Style PEAR BRILLIANT Measurements 11.05 X 7.29 X 4.34 MM

GRADING RESULTS Carat Weight 2.02 CARATS Color Grade D Clarity Grade VVS 1

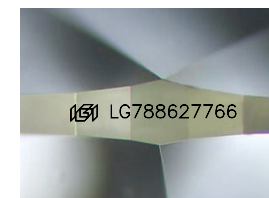


ADDITIONAL GRADING INFORMATION Polish EXCELLENT Symmetry EXCELLENT Fluorescence NONE Inscription(s) IGI LG788627766 Comments: As Grown - No indication of post-growth treatment. This Laboratory Grown Diamond was created by High Pressure High Temperature (HPHT) growth process. Type II



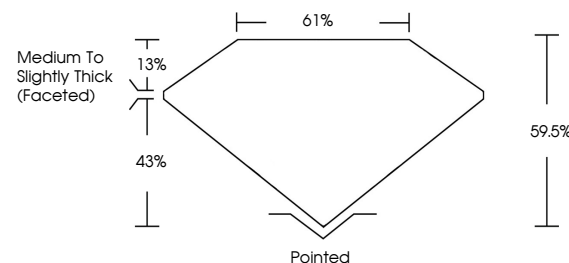
April 17, 2026 IGI Report No LG788627766 PEAR BRILLIANT 2.02 CARATS D 2.02 CARATS VVS 1 60.6% 61% Medium to Slightly Thick (Faceted) Pointed EXCELLENT EXCELLENT NONE NONE IGI LG788627766

Comments: As Grown - No indication of post-growth treatment. This Laboratory Grown Diamond was created by High Pressure High Temperature (HPHT) growth process. Type II

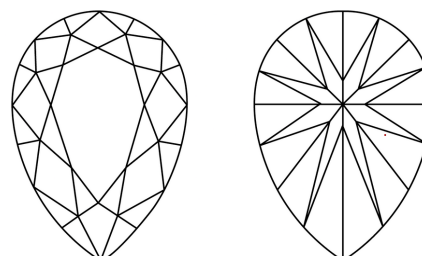


Sample Image Used

PROPORTIONS



CLARITY CHARACTERISTICS



KEY TO SYMBOLS

Red symbols indicate internal characteristics. Green symbols indicate external characteristics.

COLOR

D E F G H I J Faint Very Light Light

CLARITY

FL IF VS 1-2 VS 1-2 SI 1-2 I 1-3 Flawless Internally Flawless Very Very Slightly Included Very Slightly Included Slightly Included Included

