



May 18, 2026

IGI Report Number **LG788624743**

HALF MOON STEP CUT

LABORATORY GROWN DIAMOND

4.64 X 6.93 X 3.28 MM

Carat Weight **0.76 CARAT**

Color Grade **D**

Clarity Grade **VVS 1**

Polish **EXCELLENT**

Symmetry **EXCELLENT**

Fluorescence **NONE**

Inscription(s) **IGI LG788624743**

Comments: As Grown - No indication of post-growth treatment. This Laboratory Grown Diamond was created by High Pressure High Temperature (HPHT) growth process. Type II

**LABORATORY GROWN DIAMOND REPORT**

May 18, 2026

IGI Report Number

**LG788624743**

Description

**LABORATORY GROWN DIAMOND**

Shape and Cutting Style

**HALF MOON STEP CUT**

Measurements

**4.64 X 6.93 X 3.28 MM**

**GRADING RESULTS**

Carat Weight

**0.76 CARAT**

Color Grade

**D**

Clarity Grade

**VVS 1**

**ADDITIONAL GRADING INFORMATION**

Polish

**EXCELLENT**

Symmetry

**EXCELLENT**

Fluorescence

**NONE**

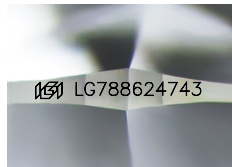
Inscription(s)

**IGI LG788624743**

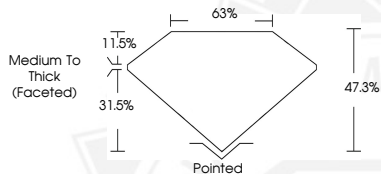
Comments: As Grown - No indication of post-growth treatment.

This Laboratory Grown Diamond was created by High Pressure High Temperature (HPHT) growth process.

Type II



Sample Image Used



May 18, 2026

IGI Report Number **LG788624743**

HALF MOON STEP CUT

LABORATORY GROWN DIAMOND

4.64 X 6.93 X 3.28 MM

Carat Weight **0.76 CARAT**

Color Grade **D**

Clarity Grade **VVS 1**

Polish **EXCELLENT**

Symmetry **EXCELLENT**

Fluorescence **NONE**

Inscription(s) **IGI LG788624743**

Comments: As Grown - No indication of post-growth treatment. This Laboratory Grown Diamond was created by High Pressure High Temperature (HPHT) growth process. Type II



THIS DOCUMENT WAS PRODUCED WITH THE FOLLOWING SECURITY MEASURES: SPECIAL DOCUMENT PAPER, INK SCREENS, WATERMARK, BACKGROUND DESIGNS, HOLOGRAM AND OTHER SECURITY FEATURES NOT LISTED AND DO EXCEED DOCUMENT SECURITY INDUSTRY GUIDELINES.