



**INTERNATIONAL
GEMOLOGICAL
INSTITUTE**

ELECTRONIC COPY



May 15, 2026

IGI Report Number LG788624672
**CUT CORNERED RECTANGULAR
MODIFIED BRILLIANT**
LABORATORY GROWN DIAMOND
6.41 X 4.48 X 2.95 MM

Carat Weight **0.72 CARAT**
Color Grade **D**
Clarity Grade **VVS 1**
Polish **EXCELLENT**
Symmetry **EXCELLENT**
Fluorescence **NONE**
Inscription(s) **IGI LG788624672**

Comments: As Grown - No indication of post-growth treatment. This Laboratory Grown Diamond was created by High Pressure High Temperature (HPHT) growth process. Type II

LABORATORY GROWN DIAMOND REPORT

May 15, 2026
IGI Report Number **LG788624672**
Description **LABORATORY GROWN DIAMOND**
Shape and Cutting Style **CUT CORNERED RECTANGULAR MODIFIED
BRILLIANT**
Measurements **6.41 X 4.48 X 2.95 MM**

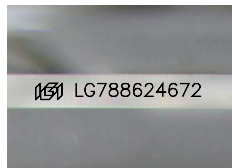
GRADING RESULTS

Carat Weight **0.72 CARAT**
Color Grade **D**
Clarity Grade **VVS 1**

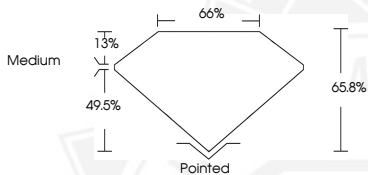
ADDITIONAL GRADING INFORMATION

Polish **EXCELLENT**
Symmetry **EXCELLENT**
Fluorescence **NONE**
Inscription(s) **IGI LG788624672**

Comments: As Grown - No indication of post-growth treatment. This Laboratory Grown Diamond was created by High Pressure High Temperature (HPHT) growth process. Type II



Sample Image Used



May 15, 2026

IGI Report Number LG788624672
**CUT CORNERED RECTANGULAR
MODIFIED BRILLIANT**
LABORATORY GROWN DIAMOND
6.41 X 4.48 X 2.95 MM

Carat Weight **0.72 CARAT**
Color Grade **D**
Clarity Grade **VVS 1**
Polish **EXCELLENT**
Symmetry **EXCELLENT**
Fluorescence **NONE**
Inscription(s) **IGI LG788624672**

Comments: As Grown - No indication of post-growth treatment. This Laboratory Grown Diamond was created by High Pressure High Temperature (HPHT) growth process. Type II

THIS DOCUMENT WAS PRODUCED WITH THE FOLLOWING SECURITY MEASURES: SPECIAL DOCUMENT PAPER, INK SCREENS, WATERMARK, BACKGROUND DESIGNS, HOLOGRAM AND OTHER SECURITY FEATURES NOT LISTED AND DO EXCEED DOCUMENT SECURITY INDUSTRY GUIDELINES.

For terms & conditions and to verify this report, please visit www.igi.org