



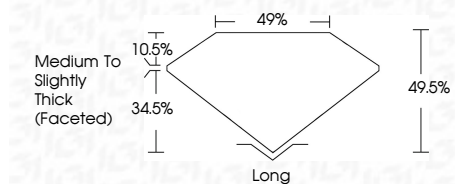
ELECTRONIC COPY

LG788624605
Report verification at igi.org



May 12, 2026
IGI Report Number **LG788624605**
Description **LABORATORY GROWN DIAMOND**
Shape and Cutting Style **MODIFIED LEAF STEP CUT**
Measurements **16.68 X 8.87 X 5.46 MM**

GRADING RESULTS
Carat Weight **6.50 CARATS**
Color Grade **F**
Clarity Grade **VVS 2**



ADDITIONAL GRADING INFORMATION
Polish **EXCELLENT**
Symmetry **EXCELLENT**
Fluorescence **NONE**
Inscription(s) **IGI LG788624605**
Comments: This Laboratory Grown Diamond was created by Chemical Vapor Deposition (CVD) growth process. Type IIa



May 12, 2026
IGI Report No **LG788624605**
MODIFIED LEAF STEP CUT
16.68 X 8.87 X 5.46 MM
Carat Weight **6.50 CARATS**
Color Grade **F**
Clarity Grade **VVS 2**
Depth **49.05%**
Table **49%**
Girdle **Medium to Slightly Thick (Faceted)**
Culet **Long**
Polish **EXCELLENT**
Symmetry **EXCELLENT**
Fluorescence **NONE**
Inscription(s) **IGI LG788624605**
Comments: This Laboratory Grown Diamond was created by Chemical Vapor Deposition (CVD) growth process. Type IIa

LABORATORY GROWN DIAMOND REPORT

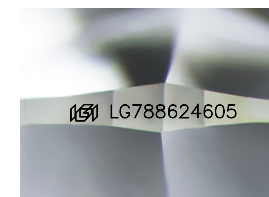
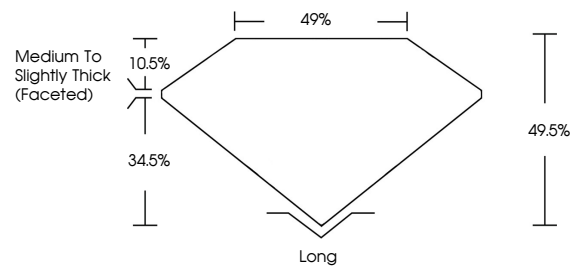
May 12, 2026
IGI Report Number **LG788624605**
Description **LABORATORY GROWN DIAMOND**
Shape and Cutting Style **MODIFIED LEAF STEP CUT**
Measurements **16.68 X 8.87 X 5.46 MM**

GRADING RESULTS
Carat Weight **6.50 CARATS**
Color Grade **F**
Clarity Grade **VVS 2**

ADDITIONAL GRADING INFORMATION
Polish **EXCELLENT**
Symmetry **EXCELLENT**
Fluorescence **NONE**
Inscription(s) **IGI LG788624605**

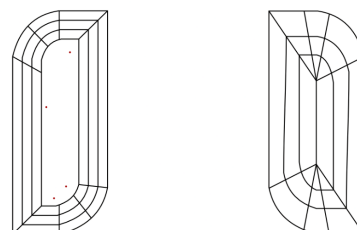
Comments: This Laboratory Grown Diamond was created by Chemical Vapor Deposition (CVD) growth process. Type IIa

PROPORTIONS



Sample Image Used

CLARITY CHARACTERISTICS



KEY TO SYMBOLS

Red symbols indicate internal characteristics.
Green symbols indicate external characteristics.

COLOR

D E F G H I J Faint Very Light Light

CLARITY

FL	IF	VVS ¹⁻²	VS ¹⁻²	SI ¹⁻²	I ¹⁻³
Flawless	Internally Flawless	Very Very Slightly Included	Very Slightly Included	Slightly Included	Included

