



ELECTRONIC COPY

LG788624574
Report verification at igi.org



May 13, 2026
IGI Report Number **LG788624574**

Description **LABORATORY GROWN DIAMOND**

Shape and Cutting Style **ANTIQUÉ CUSHION CUT**

Measurements **12.48 X 7.92 X 5.60 MM**

GRADING RESULTS

Carat Weight **4.04 CARATS**

Color Grade **FANCY VIVID GREEN**

Clarity Grade **VS 2**

May 13, 2026
IGI Report Number **LG788624574**
Description **LABORATORY GROWN DIAMOND**
Shape and Cutting Style **ANTIQUÉ CUSHION CUT**
Measurements **12.48 X 7.92 X 5.60 MM**

GRADING RESULTS

Carat Weight **4.04 CARATS**

Color Grade **FANCY VIVID GREEN**

Clarity Grade **VS 2**

ADDITIONAL GRADING INFORMATION

Polish **VERY GOOD**

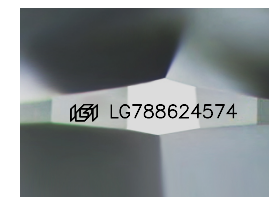
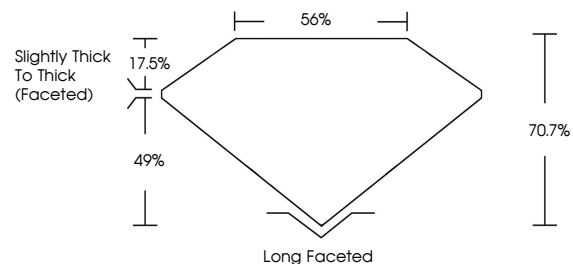
Symmetry **VERY GOOD**

Fluorescence **VERY SLIGHT**

Inscription(s) **IGI LG788624574**

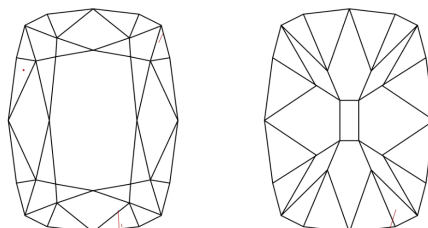
Comments: This Laboratory Grown Diamond was created by Chemical Vapor Deposition (CVD) growth process.
Indications of post-growth treatment.

PROPORTIONS



Sample Image Used

CLARITY CHARACTERISTICS



KEY TO SYMBOLS

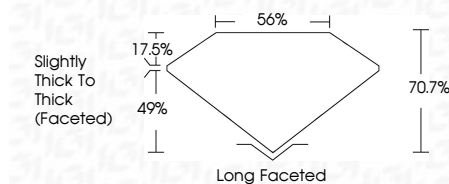
Red symbols indicate internal characteristics.
Green symbols indicate external characteristics.

COLOR

D E F G H I J Faint Very Light Light

CLARITY

FL	IF	VS ¹⁻²	VS ¹⁻²	SI ¹⁻²	I ¹⁻³
Flawless	Internally Flawless	Very Very Slightly Included	Very Slightly Included	Slightly Included	Included



ADDITIONAL GRADING INFORMATION

Polish **VERY GOOD**

Symmetry **VERY GOOD**

Fluorescence **VERY SLIGHT**

Inscription(s) **IGI LG788624574**

Comments: This Laboratory Grown Diamond was created by Chemical Vapor Deposition (CVD) growth process.
Indications of post-growth treatment.



IGI



May 13, 2026
IGI Report No **LG788624574**
ANTIQUÉ CUSHION CUT
12.48 X 7.92 X 5.60 MM
Carat Weight **4.04 CARATS**
Color Grade **FANCY VIVID GREEN**
Clarity Grade **VS 2**
Depth **70.7%**
Table **17.5%**
Girdle **Slightly Thick To Thick (Faceted)**
Culet **Long Faceted**
Polish **VERY GOOD**
Symmetry **VERY GOOD**
Fluorescence **VERY SLIGHT**
Inscription(s) **IGI LG788624574**
Comments: This Laboratory Grown Diamond was created by Chemical Vapor Deposition (CVD) growth process.
Indications of post-growth treatment.