



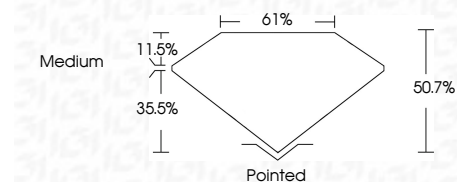
ELECTRONIC COPY

LG788624551
Report verification at igi.org



May 8, 2026
IGI Report Number **LG788624551**
Description **LABORATORY GROWN DIAMOND**
Shape and Cutting Style **TRIANGULAR BRILLIANT**
Measurements **7.15 X 7.50 X 3.80 MM**

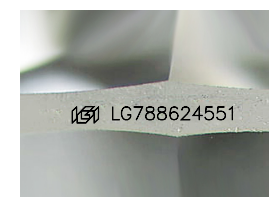
GRADING RESULTS
Carat Weight **1.05 CARAT**
Color Grade **D**
Clarity Grade **VVS 1**



ADDITIONAL GRADING INFORMATION
Polish **EXCELLENT**
Symmetry **EXCELLENT**
Fluorescence **NONE**
Inscription(s) **(IGI) LG788624551**
Comments: As Grown - No indication of post-growth treatment.
This Laboratory Grown Diamond was created by High Pressure High Temperature (HPHT) growth process.
Type II

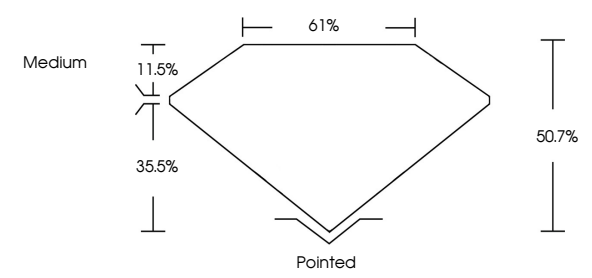


May 8, 2026
IGI Report No LG788624551
TRIANGULAR BRILLIANT
1.05 CARAT
D
Carat Weight **1.05 CARAT**
Color Grade **D**
Clarity Grade **VVS 1**
Depth **60.7%**
Table **61%**
Girdle **Medium**
Culet **Pointed**
Polish **EXCELLENT**
Symmetry **EXCELLENT**
Fluorescence **NONE**
Inscription(s) **(IGI) LG788624551**
Comments: As Grown - No indication of post-growth treatment.
This Laboratory Grown Diamond was created by High Pressure High Temperature (HPHT) growth process.
Type II

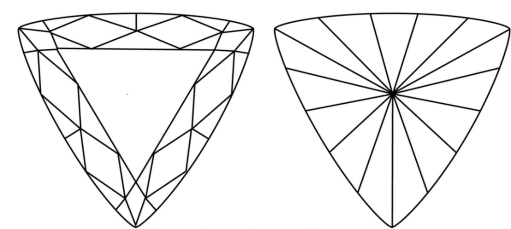


Sample Image Used

PROPORTIONS



CLARITY CHARACTERISTICS



KEY TO SYMBOLS
Red symbols indicate internal characteristics.
Green symbols indicate external characteristics.

COLOR

D	E	F	G	H	I	J	Faint	Very Light	Light
---	---	---	---	---	---	---	-------	------------	-------

CLARITY

FL	IF	VVS ¹⁻²	VS ¹⁻²	SI ¹⁻²	I ¹⁻³
Flawless	Internally Flawless	Very Very Slightly Included	Very Slightly Included	Slightly Included	Included

