



ELECTRONIC COPY

LG788624549
Report verification at igi.org



May 8, 2026

IGI Report Number **LG788624549**

Description **LABORATORY GROWN DIAMOND**

Shape and Cutting Style **OCTAGONAL STEP CUT**

Measurements **6.13 X 6.13 X 3.71 MM**

GRADING RESULTS

Carat Weight **1.07 CARAT**

Color Grade **D**

Clarity Grade **VS 1**

May 8, 2026
IGI Report Number **LG788624549**
Description **LABORATORY GROWN DIAMOND**
Shape and Cutting Style **OCTAGONAL STEP CUT**
Measurements **6.13 X 6.13 X 3.71 MM**

GRADING RESULTS

Carat Weight **1.07 CARAT**

Color Grade **D**

Clarity Grade **VS 1**

ADDITIONAL GRADING INFORMATION

Polish **EXCELLENT**

Symmetry **EXCELLENT**

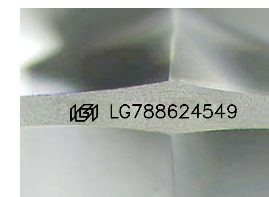
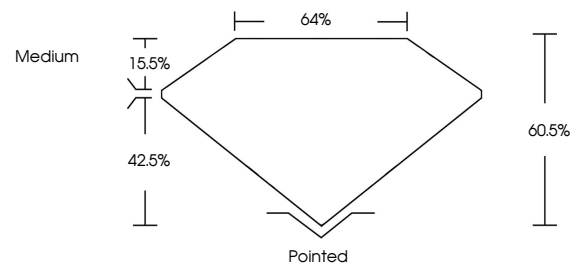
Fluorescence **NONE**

Inscription(s) **IGI LG788624549**

Comments: As Grown - No indication of post-growth treatment.

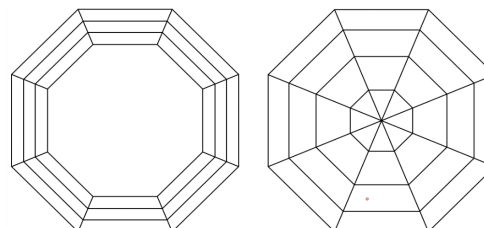
This Laboratory Grown Diamond was created by High Pressure High Temperature (HPHT) growth process. Type II

PROPORTIONS



Sample Image Used

CLARITY CHARACTERISTICS



KEY TO SYMBOLS

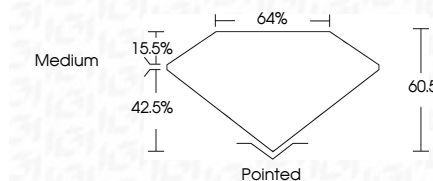
Red symbols indicate internal characteristics.
Green symbols indicate external characteristics.

COLOR

D E F G H I J Faint Very Light Light

CLARITY

FL	IF	VS ¹⁻²	VS ¹⁻²	SI ¹⁻²	I ¹⁻³
Flawless	Internally Flawless	Very Very Slightly Included	Very Slightly Included	Slightly Included	Included



ADDITIONAL GRADING INFORMATION

Polish **EXCELLENT**

Symmetry **EXCELLENT**

Fluorescence **NONE**

Inscription(s) **IGI LG788624549**

Comments: As Grown - No indication of post-growth treatment.

This Laboratory Grown Diamond was created by High Pressure High Temperature (HPHT) growth process. Type II



IGI



May 8, 2026
IGI Report No LG788624549
OCTAGONAL STEP CUT
6.13 X 6.13 X 3.71 MM
1.07 CARAT
D
VS 1
60.5%
42.5%
Medium
Pointed
EXCELLENT
EXCELLENT
NONE
IGI LG788624549

Comments: As Grown - No indication of post-growth treatment. This Laboratory Grown Diamond was created by High Pressure High Temperature (HPHT) growth process. Type II