



LABORATORY GROWN DIAMOND REPORT

May 8, 2026
 IGI Report Number **LG788624522**
 Description **LABORATORY GROWN DIAMOND**
 Shape and Cutting Style **OLD EUROPEAN CUT**
 Measurements **6.05 - 6.07 X 3.82 MM**

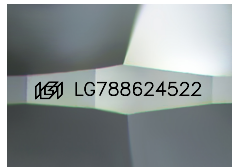
GRADING RESULTS

Carat Weight **0.92 CARAT**
 Color Grade **D**
 Clarity Grade **FLAWLESS**

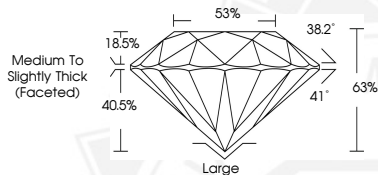
ADDITIONAL GRADING INFORMATION

Polish **EXCELLENT**
 Symmetry **EXCELLENT**
 Fluorescence **NONE**
 Inscription(s) **IGI LG788624522**

Comments: As Grown - No indication of post-growth treatment.
 This Laboratory Grown Diamond was created by High Pressure High Temperature (HPHT) growth process.
 Type II



Sample Image Used



May 8, 2026
 IGI Report Number **LG788624522**
 OLD EUROPEAN CUT
 LABORATORY GROWN DIAMOND
6.05 - 6.07 X 3.82 MM
 Carat Weight **0.92 CARAT**
 Color Grade **D**
 Clarity Grade **FLAWLESS**
 Polish **EXCELLENT**
 Symmetry **EXCELLENT**
 Fluorescence **NONE**
 Inscription(s) **IGI LG788624522**

Comments: As Grown - No indication of post-growth treatment. This Laboratory Grown Diamond was created by High Pressure High Temperature (HPHT) growth process. Type II



May 8, 2026
 IGI Report Number **LG788624522**
 OLD EUROPEAN CUT
 LABORATORY GROWN DIAMOND
6.05 - 6.07 X 3.82 MM
 Carat Weight **0.92 CARAT**
 Color Grade **D**
 Clarity Grade **FLAWLESS**
 Polish **EXCELLENT**
 Symmetry **EXCELLENT**
 Fluorescence **NONE**
 Inscription(s) **IGI LG788624522**

Comments: As Grown - No indication of post-growth treatment. This Laboratory Grown Diamond was created by High Pressure High Temperature (HPHT) growth process. Type II



THIS DOCUMENT WAS PRODUCED WITH THE FOLLOWING SECURITY MEASURES: SPECIAL DOCUMENT PAPER, INK SCREENS, WATERMARK, BACKGROUND DESIGNS, HOLOGRAM AND OTHER SECURITY FEATURES NOT LISTED AND DO EXCEED DOCUMENT SECURITY INDUSTRY GUIDELINES.