



May 7, 2026

**IGI Report Number** LG788624518  
**OLD EUROPEAN CUT**  
**LABORATORY GROWN DIAMOND**  
**5.93 - 5.94 X 3.60 MM**

**0.81 CARAT**  
**D**  
**VS 2**  
**EXCELLENT**  
**EXCELLENT**  
**NONE**  
**IGI LG788624518**

Comments: As Grown - No indication of post-growth treatment. This Laboratory Grown Diamond was created by High Pressure High Temperature (HPHT) growth process. Type II

**LABORATORY GROWN DIAMOND REPORT**

May 7, 2026  
IGI Report Number **LG788624518**  
Description **LABORATORY GROWN DIAMOND**  
Shape and Cutting Style **OLD EUROPEAN CUT**  
Measurements **5.93 - 5.94 X 3.60 MM**

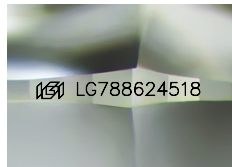
**GRADING RESULTS**

Carat Weight **0.81 CARAT**  
Color Grade **D**  
Clarity Grade **VS 2**

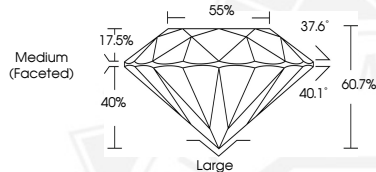
**ADDITIONAL GRADING INFORMATION**

Polish **EXCELLENT**  
Symmetry **EXCELLENT**  
Fluorescence **NONE**  
Inscription(s) **IGI LG788624518**

Comments: As Grown - No indication of post-growth treatment. This Laboratory Grown Diamond was created by High Pressure High Temperature (HPHT) growth process. Type II



Sample Image Used



May 7, 2026

**IGI Report Number** LG788624518  
**OLD EUROPEAN CUT**  
**LABORATORY GROWN DIAMOND**  
**5.93 - 5.94 X 3.60 MM**

**0.81 CARAT**  
**D**  
**VS 2**  
**EXCELLENT**  
**EXCELLENT**  
**NONE**  
**IGI LG788624518**

Comments: As Grown - No indication of post-growth treatment. This Laboratory Grown Diamond was created by High Pressure High Temperature (HPHT) growth process. Type II



THIS DOCUMENT WAS PRODUCED WITH THE FOLLOWING SECURITY MEASURES: SPECIAL DOCUMENT PAPER, INK SCREENS, WATERMARK, BACKGROUND DESIGNS, HOLOGRAM AND OTHER SECURITY FEATURES NOT LISTED AND DO EXCEED DOCUMENT SECURITY INDUSTRY GUIDELINES.