



May 8, 2026

IGI Report Number LG788624517
OLD EUROPEAN CUT
LABORATORY GROWN DIAMOND
5.87 - 5.92 X 3.60 MM

Carat Weight 0.79 CARAT
Color Grade D
Clarity Grade FLAWLESS
Polish EXCELLENT
Symmetry EXCELLENT
Fluorescence NONE
Inscription(s) IGI LG788624517

Comments: As Grown - No indication of post-growth treatment. This Laboratory Grown Diamond was created by High Pressure High Temperature (HPHT) growth process. Type II

LABORATORY GROWN DIAMOND REPORT

May 8, 2026
IGI Report Number **LG788624517**
Description **LABORATORY GROWN DIAMOND**
Shape and Cutting Style **OLD EUROPEAN CUT**
Measurements **5.87 - 5.92 X 3.60 MM**

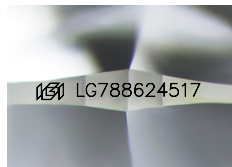
GRADING RESULTS

Carat Weight 0.79 CARAT
Color Grade D
Clarity Grade FLAWLESS

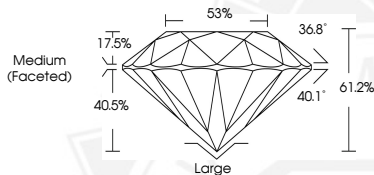
ADDITIONAL GRADING INFORMATION

Polish EXCELLENT
Symmetry EXCELLENT
Fluorescence NONE
Inscription(s) IGI LG788624517

Comments: As Grown - No indication of post-growth treatment. This Laboratory Grown Diamond was created by High Pressure High Temperature (HPHT) growth process. Type II



Sample Image Used



May 8, 2026

IGI Report Number LG788624517
OLD EUROPEAN CUT
LABORATORY GROWN DIAMOND
5.87 - 5.92 X 3.60 MM

Carat Weight 0.79 CARAT
Color Grade D
Clarity Grade FLAWLESS
Polish EXCELLENT
Symmetry EXCELLENT
Fluorescence NONE
Inscription(s) IGI LG788624517

Comments: As Grown - No indication of post-growth treatment. This Laboratory Grown Diamond was created by High Pressure High Temperature (HPHT) growth process. Type II



THIS DOCUMENT WAS PRODUCED WITH THE FOLLOWING SECURITY MEASURES: SPECIAL DOCUMENT PAPER, INK SCREENS, WATERMARK, BACKGROUND DESIGNS, HOLOGRAM AND OTHER SECURITY FEATURES NOT LISTED AND DO EXCEED DOCUMENT SECURITY INDUSTRY GUIDELINES.