



May 7, 2026

**IGI Report Number** LG788624500  
**OLD EUROPEAN CUT**  
**LABORATORY GROWN DIAMOND**  
**6.02 - 6.05 X 3.77 MM**

**Carat Weight** 0.89 CARAT  
**Color Grade** D  
**Clarity Grade** VVS 2  
**Polish** EXCELLENT  
**Symmetry** EXCELLENT  
**Fluorescence** NONE  
**Inscription(s)** IGI LG788624500

**Comments:** As Grown - No indication of post-growth treatment. This Laboratory Grown Diamond was created by High Pressure High Temperature (HPHT) growth process. Type II

**LABORATORY GROWN DIAMOND REPORT**

May 7, 2026  
IGI Report Number **LG788624500**  
Description **LABORATORY GROWN DIAMOND**  
Shape and Cutting Style **OLD EUROPEAN CUT**  
Measurements **6.02 - 6.05 X 3.77 MM**

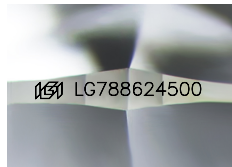
**GRADING RESULTS**

**Carat Weight** 0.89 CARAT  
**Color Grade** D  
**Clarity Grade** VVS 2

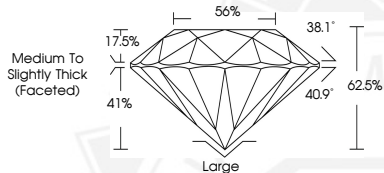
**ADDITIONAL GRADING INFORMATION**

**Polish** EXCELLENT  
**Symmetry** EXCELLENT  
**Fluorescence** NONE  
**Inscription(s)** IGI LG788624500

**Comments:** As Grown - No indication of post-growth treatment. This Laboratory Grown Diamond was created by High Pressure High Temperature (HPHT) growth process. Type II



Sample Image Used



May 7, 2026

**IGI Report Number** LG788624500  
**OLD EUROPEAN CUT**  
**LABORATORY GROWN DIAMOND**  
**6.02 - 6.05 X 3.77 MM**

**Carat Weight** 0.89 CARAT  
**Color Grade** D  
**Clarity Grade** VVS 2  
**Polish** EXCELLENT  
**Symmetry** EXCELLENT  
**Fluorescence** NONE  
**Inscription(s)** IGI LG788624500

**Comments:** As Grown - No indication of post-growth treatment. This Laboratory Grown Diamond was created by High Pressure High Temperature (HPHT) growth process. Type II



THIS DOCUMENT WAS PRODUCED WITH THE FOLLOWING SECURITY MEASURES: SPECIAL DOCUMENT PAPER, INK SCREENS, WATERMARK, BACKGROUND DESIGNS, HOLOGRAM AND OTHER SECURITY FEATURES NOT LISTED AND DO EXCEED DOCUMENT SECURITY INDUSTRY GUIDELINES.