



May 7, 2026

**IGI Report Number** LG788624481  
**OLD EUROPEAN CUT**  
**LABORATORY GROWN DIAMOND**  
**6.01 - 6.04 X 3.67 MM**  
**0.86 CARAT**  
**D**  
**VS 1**  
**EXCELLENT**  
**EXCELLENT**  
**NONE**  
**IGI LG788624481**

**LABORATORY GROWN DIAMOND REPORT**

May 7, 2026  
 IGI Report Number **LG788624481**  
 Description **LABORATORY GROWN DIAMOND**  
 Shape and Cutting Style **OLD EUROPEAN CUT**  
 Measurements **6.01 - 6.04 X 3.67 MM**

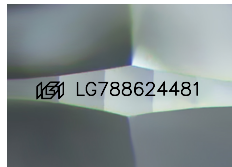
**GRADING RESULTS**

Carat Weight **0.86 CARAT**  
 Color Grade **D**  
 Clarity Grade **VS 1**

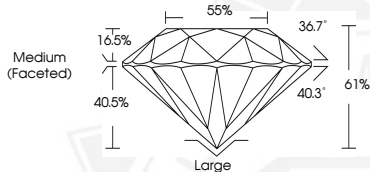
**ADDITIONAL GRADING INFORMATION**

Polish **EXCELLENT**  
 Symmetry **EXCELLENT**  
 Fluorescence **NONE**  
 Inscription(s) **IGI LG788624481**

Comments: As Grown - No indication of post-growth treatment.  
 This Laboratory Grown Diamond was created by High Pressure High Temperature (HPHT) growth process.  
 Type II



Sample Image Used



May 7, 2026

**IGI Report Number** LG788624481  
**OLD EUROPEAN CUT**  
**LABORATORY GROWN DIAMOND**  
**6.01 - 6.04 X 3.67 MM**  
**0.86 CARAT**  
**D**  
**VS 1**  
**EXCELLENT**  
**EXCELLENT**  
**NONE**  
**IGI LG788624481**

Comments: As Grown - No indication of post-growth treatment. This Laboratory Grown Diamond was created by High Pressure High Temperature (HPHT) growth process. Type II



THIS DOCUMENT WAS PRODUCED WITH THE FOLLOWING SECURITY MEASURES: SPECIAL DOCUMENT PAPER, INK SCREENS, WATERMARK, BACKGROUND DESIGNS, HOLOGRAM AND OTHER SECURITY FEATURES NOT LISTED AND DO EXCEED DOCUMENT SECURITY INDUSTRY GUIDELINES.