



ELECTRONIC COPY

LG788624475
Report verification at igi.org



May 5, 2026

IGI Report Number **LG788624475**

Description **LABORATORY GROWN DIAMOND**

Shape and Cutting Style **HEXAGONAL MIXED CUT**

Measurements **8.68 X 5.17 X 3.38 MM**

GRADING RESULTS

Carat Weight **1.10 CARAT**

Color Grade **D**

Clarity Grade **VVS 1**

May 5, 2026

IGI Report Number **LG788624475**

Description **LABORATORY GROWN DIAMOND**

Shape and Cutting Style **HEXAGONAL MIXED CUT**

Measurements **8.68 X 5.17 X 3.38 MM**

GRADING RESULTS

Carat Weight **1.10 CARAT**

Color Grade **D**

Clarity Grade **VVS 1**

ADDITIONAL GRADING INFORMATION

Polish **EXCELLENT**

Symmetry **EXCELLENT**

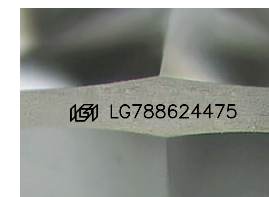
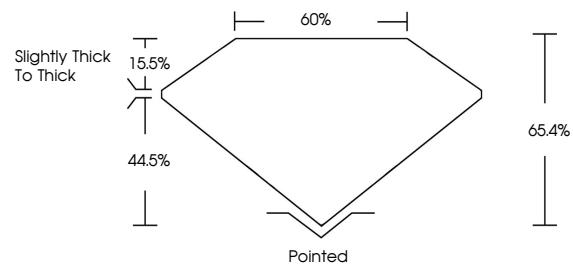
Fluorescence **NONE**

Inscription(s) **IGI LG788624475**

Comments: As Grown - No indication of post-growth treatment.

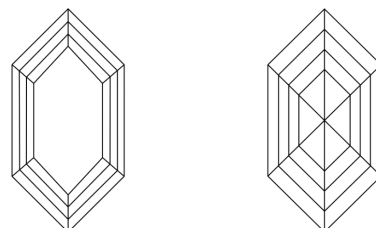
This Laboratory Grown Diamond was created by High Pressure High Temperature (HPHT) growth process. Type II

PROPORTIONS



Sample Image Used

CLARITY CHARACTERISTICS



KEY TO SYMBOLS

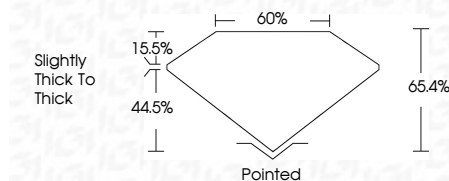
Red symbols indicate internal characteristics.
Green symbols indicate external characteristics.

COLOR

D E F G H I J Faint Very Light Light

CLARITY

FL	IF	VVS ¹⁻²	VS ¹⁻²	SI ¹⁻²	I ¹⁻³
Flawless	Internally Flawless	Very Very Slightly Included	Very Slightly Included	Slightly Included	Included



ADDITIONAL GRADING INFORMATION

Polish **EXCELLENT**

Symmetry **EXCELLENT**

Fluorescence **NONE**

Inscription(s) **IGI LG788624475**

Comments: As Grown - No indication of post-growth treatment.

This Laboratory Grown Diamond was created by High Pressure High Temperature (HPHT) growth process. Type II



IGI



May 5, 2026
IGI Report No LG788624475
HEXAGONAL MIXED CUT
8.68 X 5.17 X 3.38 MM
Carat Weight 1.10 CARAT
Color Grade D
Clarity Grade VVS 1
Depth 65.4%
Table 60%
Girdle Slightly thick to thick
Culet Pointed
Polish EXCELLENT
Symmetry EXCELLENT
Fluorescence NONE
Inscription(s) IGI LG788624475

Comments: As Grown - No indication of post-growth treatment.
This Laboratory Grown Diamond was created by High Pressure High Temperature (HPHT) growth process. Type II