



ELECTRONIC COPY

LG788624433
Report verification at igi.org



May 5, 2026
IGI Report Number **LG788624433**
Description **LABORATORY GROWN DIAMOND**
Shape and Cutting Style **HEXAGONAL MODIFIED BRILLIANT**
Measurements **7.73 X 6.73 X 4.41 MM**
GRADING RESULTS
Carat Weight **1.50 CARAT**
Color Grade **D**
Clarity Grade **VVS 2**

LABORATORY GROWN DIAMOND REPORT

May 5, 2026
IGI Report Number **LG788624433**
Description **LABORATORY GROWN DIAMOND**
Shape and Cutting Style **HEXAGONAL MODIFIED BRILLIANT**
Measurements **7.73 X 6.73 X 4.41 MM**

GRADING RESULTS

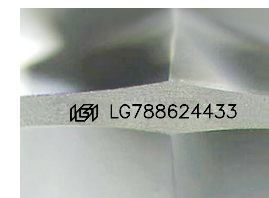
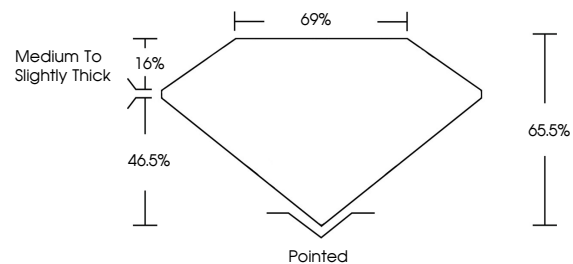
Carat Weight **1.50 CARAT**
Color Grade **D**
Clarity Grade **VVS 2**

ADDITIONAL GRADING INFORMATION

Polish **EXCELLENT**
Symmetry **EXCELLENT**
Fluorescence **NONE**
Inscription(s) **LG788624433**

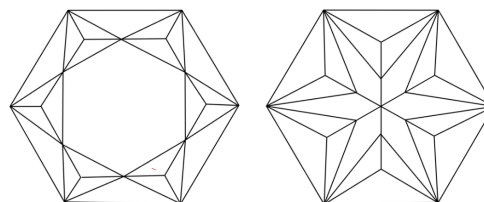
Comments: As Grown - No indication of post-growth treatment.
This Laboratory Grown Diamond was created by High Pressure High Temperature (HPHT) growth process.
Type II

PROPORTIONS



Sample Image Used

CLARITY CHARACTERISTICS



KEY TO SYMBOLS

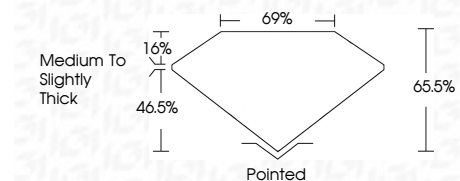
Red symbols indicate internal characteristics.
Green symbols indicate external characteristics.

COLOR

D E F G H I J Faint Very Light Light

CLARITY

FL	IF	VVS ¹⁻²	VS ¹⁻²	SI ¹⁻²	I ¹⁻³
Flawless	Internally Flawless	Very Very Slightly Included	Very Slightly Included	Slightly Included	Included



ADDITIONAL GRADING INFORMATION

Polish **EXCELLENT**
Symmetry **EXCELLENT**
Fluorescence **NONE**
Inscription(s) **LG788624433**
Comments: As Grown - No indication of post-growth treatment.
This Laboratory Grown Diamond was created by High Pressure High Temperature (HPHT) growth process.
Type II



IGI

May 5, 2026
IGI Report No **LG788624433**
HEXAGONAL MODIFIED BRILLIANT
1.50 CARAT
D
1.50 CARAT
D
VS 2
65.5%
69%
Medium to Slightly Thick
Pointed
EXCELLENT
EXCELLENT
NONE
IGI LG788624433

Comments:
As Grown - No indication of post-growth treatment.
This Laboratory Grown Diamond was created by High Pressure High Temperature (HPHT) growth process.
Type II