



**ELECTRONIC COPY**

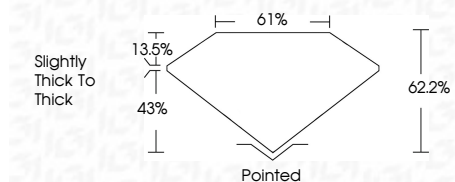
LG788624404  
Report verification at igi.org



April 30, 2026  
IGI Report Number **LG788624404**  
Description **LABORATORY GROWN DIAMOND**

Shape and Cutting Style **HEXAGONAL MIXED CUT**  
Measurements **10.02 X 5.92 X 3.68 MM**

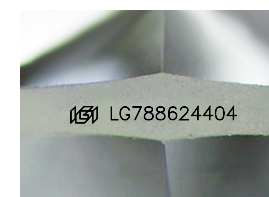
**GRADING RESULTS**  
Carat Weight **1.62 CARAT**  
Color Grade **D**  
Clarity Grade **FLAWLESS**



**ADDITIONAL GRADING INFORMATION**  
Polish **EXCELLENT**  
Symmetry **EXCELLENT**  
Fluorescence **NONE**  
Inscription(s) **IGI LG788624404**  
Comments: As Grown - No indication of post-growth treatment.  
This Laboratory Grown Diamond was created by High Pressure High Temperature (HPHT) growth process.  
Type II

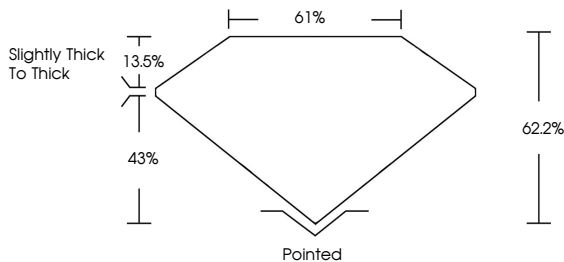


April 30, 2026  
IGI Report No **LG788624404**  
**HEXAGONAL MIXED CUT**  
10.02 X 5.92 X 3.68 MM  
Carat Weight **1.62 CARAT**  
Color Grade **D**  
Clarity Grade **FLAWLESS**  
Depth **43%**  
Table **13.5%**  
Girdle **Slightly thick to thick**  
Culet **Pointed**  
Polish **EXCELLENT**  
Symmetry **EXCELLENT**  
Fluorescence **NONE**  
Inscription(s) **IGI LG788624404**  
Comments: As Grown - No indication of post-growth treatment.  
This Laboratory Grown Diamond was created by High Pressure High Temperature (HPHT) growth process.  
Type II

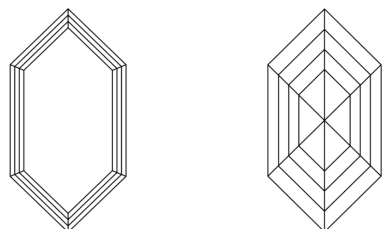


Sample Image Used

**PROPORTIONS**



**CLARITY CHARACTERISTICS**



**KEY TO SYMBOLS**  
Red symbols indicate internal characteristics.  
Green symbols indicate external characteristics.

**COLOR**

D	E	F	G	H	I	J	Faint	Very Light	Light
---	---	---	---	---	---	---	-------	------------	-------

**CLARITY**

FL	IF	VS <sup>1-2</sup>	VS <sup>1-2</sup>	SI <sup>1-2</sup>	I <sup>1-3</sup>
Flawless	Internally Flawless	Very Very Slightly Included	Very Slightly Included	Slightly Included	Included

