



**ELECTRONIC COPY**

LG788624341  
Report verification at igi.org



April 28, 2026  
IGI Report Number **LG788624341**  
Description **LABORATORY GROWN DIAMOND**  
Shape and Cutting Style **CUSHION MODIFIED BRILLIANT**  
Measurements **12.06 X 8.60 X 5.14 MM**  
**GRADING RESULTS**  
Carat Weight **3.99 CARATS**  
Color Grade **FANCY VIVID GREEN**  
Clarity Grade **VS 1**

**LABORATORY GROWN DIAMOND REPORT**

April 28, 2026  
IGI Report Number **LG788624341**  
Description **LABORATORY GROWN DIAMOND**  
Shape and Cutting Style **CUSHION MODIFIED BRILLIANT**  
Measurements **12.06 X 8.60 X 5.14 MM**

**GRADING RESULTS**

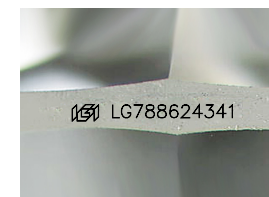
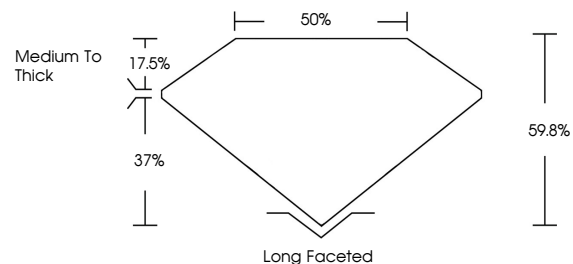
Carat Weight **3.99 CARATS**  
Color Grade **FANCY VIVID GREEN**  
Clarity Grade **VS 1**

**ADDITIONAL GRADING INFORMATION**

Polish **VERY GOOD**  
Symmetry **EXCELLENT**  
Fluorescence **SLIGHT**  
Inscription(s) **LG788624341**

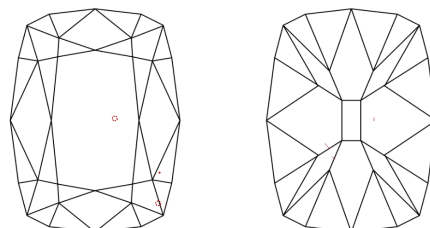
Comments: This Laboratory Grown Diamond was created by Chemical Vapor Deposition (CVD) growth process.  
Indications of post-growth treatment.

**PROPORTIONS**



Sample Image Used

**CLARITY CHARACTERISTICS**



**KEY TO SYMBOLS**

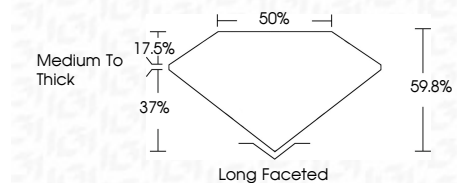
Red symbols indicate internal characteristics.  
Green symbols indicate external characteristics.

**COLOR**

D E F G H I J Faint Very Light Light

**CLARITY**

FL	IF	VS <sup>1-2</sup>	VS <sup>1-2</sup>	SI <sup>1-2</sup>	I <sup>1-3</sup>
Flawless	Internally Flawless	Very Very Slightly Included	Very Slightly Included	Slightly Included	Included



**ADDITIONAL GRADING INFORMATION**

Polish **VERY GOOD**  
Symmetry **EXCELLENT**  
Fluorescence **SLIGHT**  
Inscription(s) **LG788624341**  
Comments: This Laboratory Grown Diamond was created by Chemical Vapor Deposition (CVD) growth process.  
Indications of post-growth treatment.



April 28, 2026  
IGI Report No LG788624341  
CUSHION MODIFIED BRILLIANT

12.06 X 8.60 X 5.14 MM  
3.99 CARATS  
FANCY VIVID GREEN  
VS 1  
60%  
50%  
Medium to Thick  
Long Faceted  
VERY GOOD  
EXCELLENT  
SLIGHT  
IGI LG788624341

Comments: This Laboratory Grown Diamond was created by Chemical Vapor Deposition (CVD) growth process.  
Indications of post-growth treatment.