



**ELECTRONIC COPY**

LG788620363  
Report verification at igi.org



April 16, 2026  
IGI Report Number **LG788620363**  
Description **LABORATORY GROWN DIAMOND**  
Shape and Cutting Style **OLD EUROPEAN CUT**  
Measurements **6.39 - 6.47 X 3.79 MM**  
**GRADING RESULTS**  
Carat Weight **1.03 CARAT**  
Color Grade **VERY LIGHT BROWN**  
Clarity Grade **VS 1**

April 16, 2026  
IGI Report Number **LG788620363**  
Description **LABORATORY GROWN DIAMOND**  
Shape and Cutting Style **OLD EUROPEAN CUT**  
Measurements **6.39 - 6.47 X 3.79 MM**

**GRADING RESULTS**

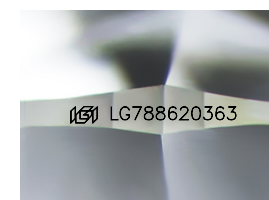
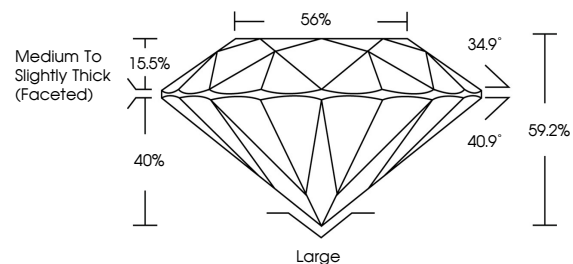
Carat Weight **1.03 CARAT**  
Color Grade **VERY LIGHT BROWN**  
Clarity Grade **VS 1**

**ADDITIONAL GRADING INFORMATION**

Polish **EXCELLENT**  
Symmetry **EXCELLENT**  
Fluorescence **VERY SLIGHT**  
Inscription(s) **IGI LG788620363**

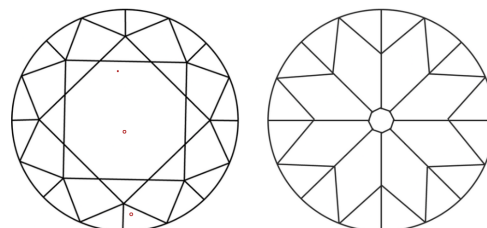
Comments: This Laboratory Grown Diamond was created by Chemical Vapor Deposition (CVD) growth process.  
Type IIa

**PROPORTIONS**



Sample Image Used

**CLARITY CHARACTERISTICS**



**KEY TO SYMBOLS**

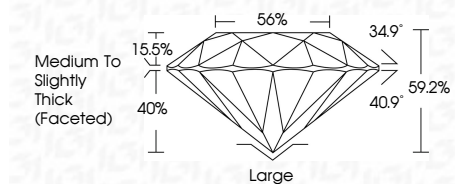
Red symbols indicate internal characteristics.  
Green symbols indicate external characteristics.

**COLOR**

D E F G H I J Faint Very Light Light

**CLARITY**

FL	IF	VS <sup>1-2</sup>	VS <sup>1-2</sup>	SI <sup>1-2</sup>	I <sup>1-3</sup>
Flawless	Internally Flawless	Very Very Slightly Included	Very Slightly Included	Slightly Included	Included



**ADDITIONAL GRADING INFORMATION**

Polish **EXCELLENT**  
Symmetry **EXCELLENT**  
Fluorescence **VERY SLIGHT**  
Inscription(s) **IGI LG788620363**  
Comments: This Laboratory Grown Diamond was created by Chemical Vapor Deposition (CVD) growth process.  
Type IIa



April 16, 2026  
IGI Report No LG788620363  
**OLD EUROPEAN CUT**  
6.39 - 6.47 X 3.79 MM  
1.03 CARAT  
**VERY LIGHT BROWN**  
Color Grade  
VS 1  
Clarity Grade  
60.2%  
56%  
Medium to Slightly Thick (Faceted)  
Large  
EXCELLENT  
EXCELLENT  
VERY SLIGHT  
IGI LG788620363  
Inscription(s)  
Comments: This Laboratory Grown Diamond was created by Chemical Vapor Deposition (CVD) growth process.  
Type IIa