



ELECTRONIC COPY

LG788620338
Report verification at igi.org



April 16, 2026

IGI Report Number **LG788620338**

Description **LABORATORY GROWN DIAMOND**

Shape and Cutting Style **CUT CORNERED
RECTANGULAR MODIFIED
BRILLIANT**

Measurements **8.97 X 6.47 X 4.38 MM**

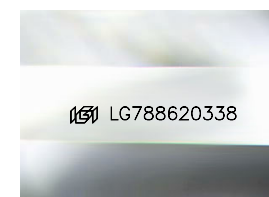
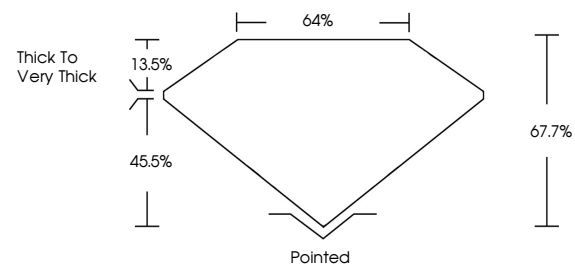
GRADING RESULTS

Carat Weight **2.53 CARATS**

Color Grade **FANCY BROWN**

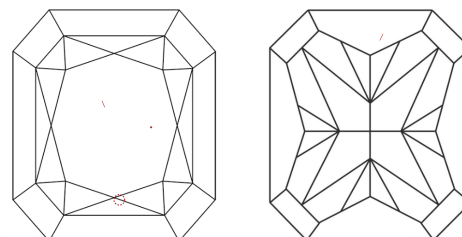
Clarity Grade **VVS 2**

PROPORTIONS



Sample Image Used

CLARITY CHARACTERISTICS



KEY TO SYMBOLS

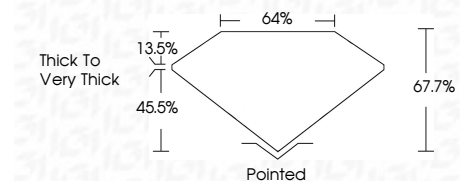
Red symbols indicate internal characteristics.
Green symbols indicate external characteristics.

COLOR

D E F G H I J Faint Very Light Light

CLARITY

FL	IF	VVS ¹⁻²	VS ¹⁻²	SI ¹⁻²	I ¹⁻³
Flawless	Internally Flawless	Very Very Slightly Included	Very Slightly Included	Slightly Included	Included



ADDITIONAL GRADING INFORMATION

Polish **VERY GOOD**

Symmetry **EXCELLENT**

Fluorescence **VERY SLIGHT**

Inscription(s) **IGI LG788620338**

Comments: This Laboratory Grown Diamond was created by Chemical Vapor Deposition (CVD) growth process.



IGI



April 16, 2026
IGI Report No LG788620338
CUT CORNERED RECT. MODIFIED BRILLIANT
8.97 X 6.47 X 4.38 MM
Carat Weight 2.53 CARATS
Color Grade FANCY BROWN
Clarity Grade VVS 2
Table 45.5%
Depth 67.7%
Girdle Thick to Very Thick
Culet Pointed
Polish VERY GOOD
Symmetry EXCELLENT
Fluorescence VERY SLIGHT
Inscription(s) IGI LG788620338
Comments: This Laboratory Grown Diamond was created by Chemical Vapor Deposition (CVD) growth process.