



ELECTRONIC COPY

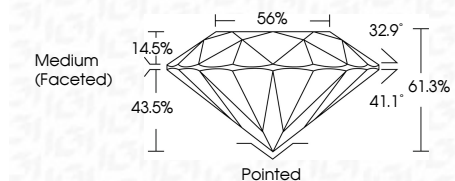
LG788620149
Report verification at igi.org



April 16, 2026
IGI Report Number **LG788620149**
Description **LABORATORY GROWN DIAMOND**
Shape and Cutting Style **ROUND BRILLIANT**
Measurements **6.46 - 6.51 X 3.98 MM**

GRADING RESULTS

Carat Weight **1.01 CARAT**
Color Grade **FANCY BROWN**
Clarity Grade **VS 1**
Cut Grade **IDEAL**

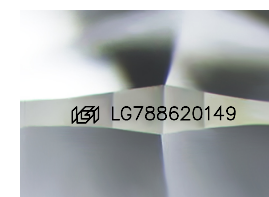


ADDITIONAL GRADING INFORMATION

Polish **VERY GOOD**
Symmetry **VERY GOOD**
Fluorescence **VERY SLIGHT**
Inscription(s) **IGI LG788620149**
Comments: This Laboratory Grown Diamond was created by Chemical Vapor Deposition (CVD) growth process.

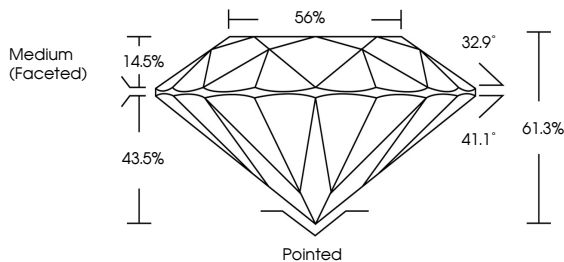


April 16, 2026
IGI Report No LG788620149
ROUND BRILLIANT
6.46 - 6.51 X 3.98 MM
1.01 CARAT
FANCY BROWN
VS 1
IDEAL
61.3%
56%
Medium (Faceted)
Pointed
VERY GOOD
VERY GOOD
VERY SLIGHT
IGI LG788620149
Comments: This Laboratory Grown Diamond was created by Chemical Vapor Deposition (CVD) growth process.

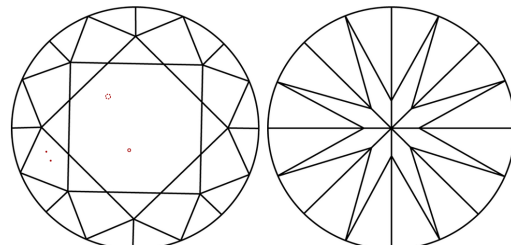


Sample Image Used

PROPORTIONS



CLARITY CHARACTERISTICS



KEY TO SYMBOLS

Red symbols indicate internal characteristics.
Green symbols indicate external characteristics.

COLOR

D	E	F	G	H	I	J	Faint	Very Light	Light
---	---	---	---	---	---	---	-------	------------	-------

CLARITY

FL	IF	VS ¹⁻²	VS ¹⁻²	SI ¹⁻²	I ¹⁻³
Flawless	Internally Flawless	Very Very Slightly Included	Very Slightly Included	Slightly Included	Included

