



**ELECTRONIC COPY**

LG788620120  
Report verification at igi.org



April 16, 2026

IGI Report Number **LG788620120**

Description **LABORATORY GROWN DIAMOND**

Shape and Cutting Style **SQUARE EMERALD CUT**

Measurements **6.64 X 6.57 X 4.35 MM**

**GRADING RESULTS**

Carat Weight **1.76 CARAT**

Color Grade **FANCY INTENSE BLUE**

Clarity Grade **VVS 2**

April 16, 2026  
IGI Report Number **LG788620120**  
Description **LABORATORY GROWN DIAMOND**  
Shape and Cutting Style **SQUARE EMERALD CUT**  
Measurements **6.64 X 6.57 X 4.35 MM**

**GRADING RESULTS**

Carat Weight **1.76 CARAT**

Color Grade **FANCY INTENSE BLUE**

Clarity Grade **VVS 2**

**ADDITIONAL GRADING INFORMATION**

Polish **GOOD**

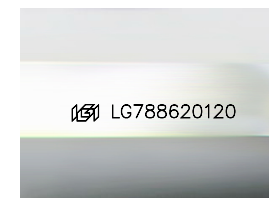
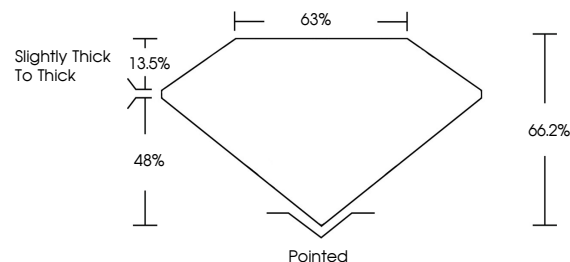
Symmetry **EXCELLENT**

Fluorescence **NONE**

Inscription(s) **IGI LG788620120**

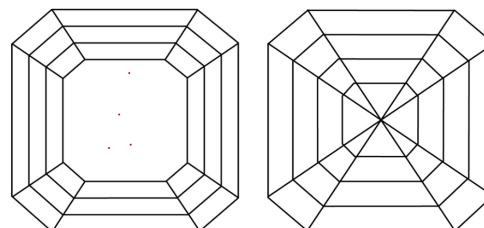
Comments: This Laboratory Grown Diamond was created by Chemical Vapor Deposition (CVD) growth process. Indications of post-growth treatment.

**PROPORTIONS**



Sample Image Used

**CLARITY CHARACTERISTICS**



**KEY TO SYMBOLS**

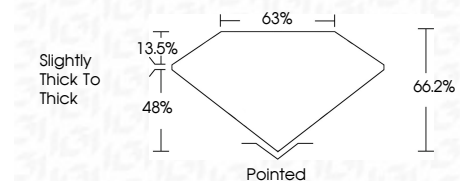
Red symbols indicate internal characteristics.  
Green symbols indicate external characteristics.

**COLOR**

D E F G H I J Faint Very Light Light

**CLARITY**

FL	IF	VVS <sup>1-2</sup>	VS <sup>1-2</sup>	SI <sup>1-2</sup>	I <sup>1-3</sup>
Flawless	Internally Flawless	Very Very Slightly Included	Very Slightly Included	Slightly Included	Included



**ADDITIONAL GRADING INFORMATION**

Polish **GOOD**

Symmetry **EXCELLENT**

Fluorescence **NONE**

Inscription(s) **IGI LG788620120**

Comments: This Laboratory Grown Diamond was created by Chemical Vapor Deposition (CVD) growth process. Indications of post-growth treatment.



**IGI**



April 16, 2026  
IGI Report No LG788620120  
**SQUARE EMERALD CUT**  
1.76 CARAT  
Carat Weight  
Color Grade **FANCY INTENSE BLUE**  
Clarity Grade **VVS 2**  
Depth **66.2%**  
Table **63%**  
Girdle **Slightly thick to thick**  
Culet **Pointed**  
Polish **GOOD**  
Symmetry **EXCELLENT**  
Fluorescence **NONE**  
Inscription(s) **IGI LG788620120**  
Comments: This Laboratory Grown Diamond was created by Chemical Vapor Deposition (CVD) growth process. Indications of post-growth treatment.