



ELECTRONIC COPY

LG788619778
Report verification at igi.org



April 9, 2026

IGI Report Number **LG788619778**

Description **LABORATORY GROWN DIAMOND**

Shape and Cutting Style **CUT CORNERED
RECTANGULAR MODIFIED
BRILLIANT**

Measurements **8.71 X 5.82 X 4.15 MM**

GRADING RESULTS

Carat Weight **2.03 CARATS**

Color Grade **FANCY INTENSE BLUE**

Clarity Grade **VVS 2**

LABORATORY GROWN DIAMOND REPORT

April 9, 2026

IGI Report Number **LG788619778**

Description **LABORATORY GROWN DIAMOND**

Shape and Cutting Style **CUT CORNERED RECTANGULAR
MODIFIED BRILLIANT**

Measurements **8.71 X 5.82 X 4.15 MM**

GRADING RESULTS

Carat Weight **2.03 CARATS**

Color Grade **FANCY INTENSE BLUE**

Clarity Grade **VVS 2**

ADDITIONAL GRADING INFORMATION

Polish **EXCELLENT**

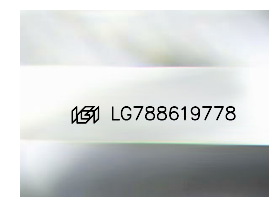
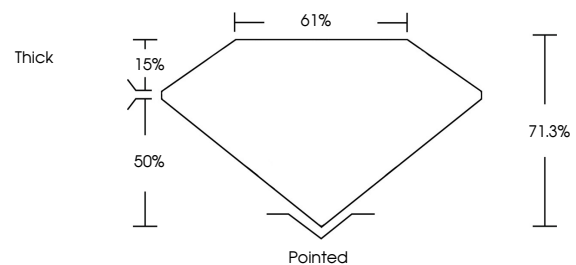
Symmetry **EXCELLENT**

Fluorescence **NONE**

Inscription(s) **IGI LG788619778**

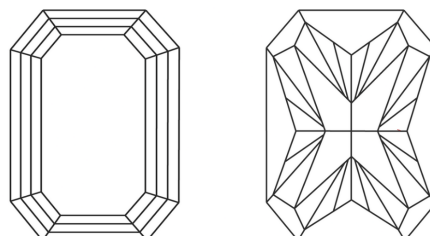
Comments: This Laboratory Grown Diamond was created by High Pressure High Temperature (HPHT) growth process. Indications of post-growth treatment.

PROPORTIONS



Sample Image Used

CLARITY CHARACTERISTICS



KEY TO SYMBOLS

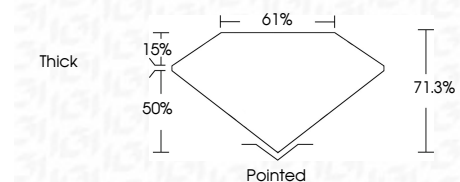
Red symbols indicate internal characteristics.
Green symbols indicate external characteristics.

COLOR

D E F G H I J Faint Very Light Light

CLARITY

FL	IF	VVS ¹⁻²	VS ¹⁻²	SI ¹⁻²	I ¹⁻³
Flawless	Internally Flawless	Very Very Slightly Included	Very Slightly Included	Slightly Included	Included



ADDITIONAL GRADING INFORMATION

Polish **EXCELLENT**

Symmetry **EXCELLENT**

Fluorescence **NONE**

Inscription(s) **IGI LG788619778**

Comments: This Laboratory Grown Diamond was created by High Pressure High Temperature (HPHT) growth process. Indications of post-growth treatment.



April 9, 2026
IGI Report No LG788619778
CUT CORNERED RECT. MODIFIED BRILLIANT

8.71 X 5.82 X 4.15 MM
2.03 CARATS
FANCY INTENSE BLUE
VVS 2
71.3%
61%
Thick

Pointed
EXCELLENT
EXCELLENT
NONE
IGI LG788619778

Comments: This Laboratory Grown Diamond was created by High Pressure High Temperature (HPHT) growth process. Indications of post-growth treatment.