



ELECTRONIC COPY

LG788619742
Report verification at igi.org



April 9, 2026

IGI Report Number **LG788619742**

Description **LABORATORY GROWN DIAMOND**

Shape and Cutting Style **CUT CORNERED
RECTANGULAR MODIFIED
BRILLIANT**

Measurements **6.50 X 4.75 X 3.35 MM**

GRADING RESULTS

Carat Weight **1.02 CARAT**

Color Grade **LIGHT GRAY BLUE**

Clarity Grade **VVS 2**

LABORATORY GROWN DIAMOND REPORT

April 9, 2026

IGI Report Number **LG788619742**

Description **LABORATORY GROWN DIAMOND**

Shape and Cutting Style **CUT CORNERED RECTANGULAR
MODIFIED BRILLIANT**

Measurements **6.50 X 4.75 X 3.35 MM**

GRADING RESULTS

Carat Weight **1.02 CARAT**

Color Grade **LIGHT GRAY BLUE**

Clarity Grade **VVS 2**

ADDITIONAL GRADING INFORMATION

Polish **VERY GOOD**

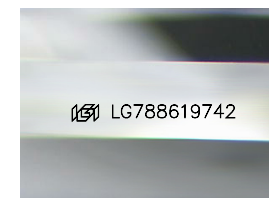
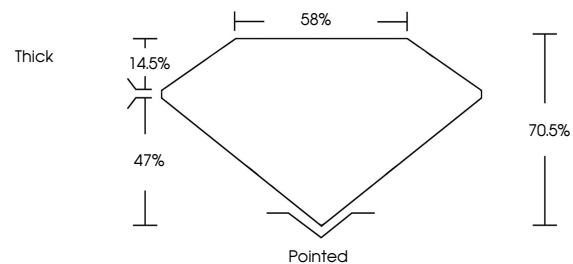
Symmetry **VERY GOOD**

Fluorescence **NONE**

Inscription(s) **IGI LG788619742**

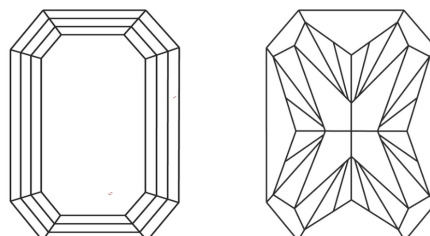
Comments: This Laboratory Grown Diamond was created by Chemical Vapor Deposition (CVD) growth process.
Type IIa

PROPORTIONS



Sample Image Used

CLARITY CHARACTERISTICS



KEY TO SYMBOLS

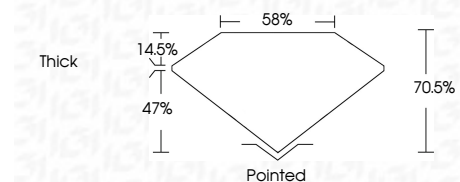
Red symbols indicate internal characteristics.
Green symbols indicate external characteristics.

COLOR

D E F G H I J Faint Very Light Light

CLARITY

FL	IF	VVS ¹⁻²	VS ¹⁻²	SI ¹⁻²	I ¹⁻³
Flawless	Internally Flawless	Very Very Slightly Included	Very Slightly Included	Slightly Included	Included



ADDITIONAL GRADING INFORMATION

Polish **VERY GOOD**

Symmetry **VERY GOOD**

Fluorescence **NONE**

Inscription(s) **IGI LG788619742**

Comments: This Laboratory Grown Diamond was created by Chemical Vapor Deposition (CVD) growth process.
Type IIa



IGI



April 9, 2026
IGI Report No LG788619742
CUT CORNERED RECT. MODIFIED BRILLIANT
6.50 X 4.75 X 3.35 MM
1.02 CARAT
LIGHT GRAY BLUE
VVS 2
70.5%
85%
Thick
Pointed
Polish VERY GOOD
Symmetry VERY GOOD
Fluorescence NONE
Inscription(s) IGI LG788619742
Comments: This Laboratory Grown Diamond was created by Chemical Vapor Deposition (CVD) growth process.
Type IIa