



**ELECTRONIC COPY**

LG788619739  
Report verification at igi.org



April 9, 2026  
IGI Report Number **LG788619739**  
Description **LABORATORY GROWN DIAMOND**  
Shape and Cutting Style **CUSHION MODIFIED BRILLIANT**  
Measurements **8.13 X 6.86 X 4.47 MM**  
**GRADING RESULTS**  
Carat Weight **2.32 CARATS**  
Color Grade **FANCY INTENSE BLUE**  
Clarity Grade **VS 2**

April 9, 2026  
IGI Report Number **LG788619739**  
Description **LABORATORY GROWN DIAMOND**  
Shape and Cutting Style **CUSHION MODIFIED BRILLIANT**  
Measurements **8.13 X 6.86 X 4.47 MM**

**GRADING RESULTS**

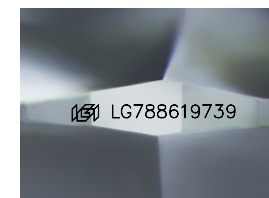
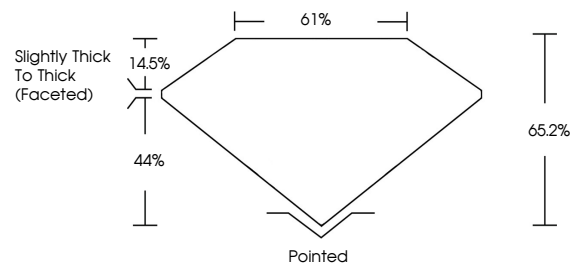
Carat Weight **2.32 CARATS**  
Color Grade **FANCY INTENSE BLUE**  
Clarity Grade **VS 2**

**ADDITIONAL GRADING INFORMATION**

Polish **EXCELLENT**  
Symmetry **EXCELLENT**  
Fluorescence **NONE**  
Inscription(s) **LG788619739**

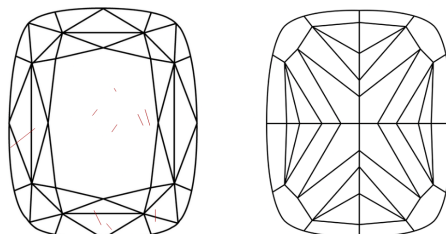
Comments: This Laboratory Grown Diamond was created by Chemical Vapor Deposition (CVD) growth process.  
Indications of post-growth treatment.

**PROPORTIONS**



Sample Image Used

**CLARITY CHARACTERISTICS**



**KEY TO SYMBOLS**

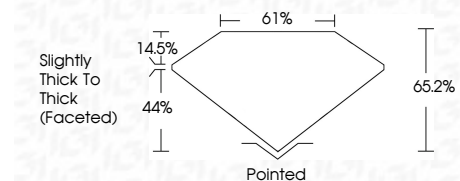
Red symbols indicate internal characteristics.  
Green symbols indicate external characteristics.

**COLOR**

D E F G H I J Faint Very Light Light

**CLARITY**

FL	IF	VS <sup>1-2</sup>	VS <sup>1-2</sup>	SI <sup>1-2</sup>	I <sup>1-3</sup>
Flawless	Internally Flawless	Very Very Slightly Included	Very Slightly Included	Slightly Included	Included



**ADDITIONAL GRADING INFORMATION**

Polish **EXCELLENT**  
Symmetry **EXCELLENT**  
Fluorescence **NONE**  
Inscription(s) **LG788619739**  
Comments: This Laboratory Grown Diamond was created by Chemical Vapor Deposition (CVD) growth process.  
Indications of post-growth treatment.



April 9, 2026  
IGI Report No **LG788619739**  
**CUSHION MODIFIED BRILLIANT**  
**8.13 X 6.86 X 4.47 MM**  
Carat Weight **2.32 CARATS**  
Color Grade **FANCY INTENSE BLUE**  
Clarity Grade **VS 2**  
Depth **65.2%**  
Table **61%**  
Girdle **Slightly Thick To Thick (Faceted)**  
Culet **Pointed**  
Polish **EXCELLENT**  
Symmetry **EXCELLENT**  
Fluorescence **NONE**  
Inscription(s) **LG788619739**  
Comments: This Laboratory Grown Diamond was created by Chemical Vapor Deposition (CVD) growth process.  
Indications of post-growth treatment.