



ELECTRONIC COPY

LG788619726
Report verification at igi.org



April 9, 2026
IGI Report Number **LG788619726**
Description **LABORATORY GROWN DIAMOND**
Shape and Cutting Style **SQUARE CUSHION MODIFIED BRILLIANT**
Measurements **7.28 X 7.11 X 4.95 MM**
GRADING RESULTS
Carat Weight **2.50 CARATS**
Color Grade **FANCY INTENSE BLUE**
Clarity Grade **VVS 1**

LABORATORY GROWN DIAMOND REPORT

April 9, 2026
IGI Report Number **LG788619726**
Description **LABORATORY GROWN DIAMOND**
Shape and Cutting Style **SQUARE CUSHION MODIFIED BRILLIANT**
Measurements **7.28 X 7.11 X 4.95 MM**

GRADING RESULTS

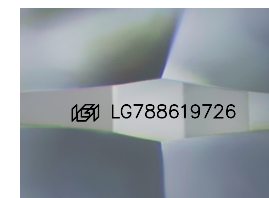
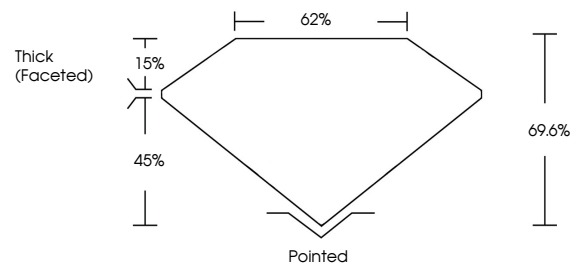
Carat Weight **2.50 CARATS**
Color Grade **FANCY INTENSE BLUE**
Clarity Grade **VVS 1**

ADDITIONAL GRADING INFORMATION

Polish **EXCELLENT**
Symmetry **EXCELLENT**
Fluorescence **NONE**
Inscription(s) **IGI LG788619726**

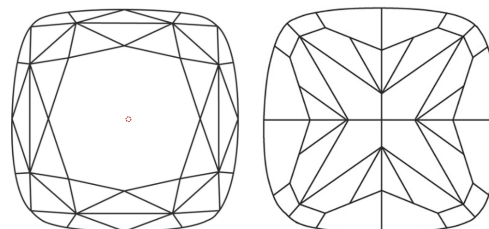
Comments: This Laboratory Grown Diamond was created by Chemical Vapor Deposition (CVD) growth process. Indications of post-growth treatment.

PROPORTIONS



Sample Image Used

CLARITY CHARACTERISTICS



KEY TO SYMBOLS

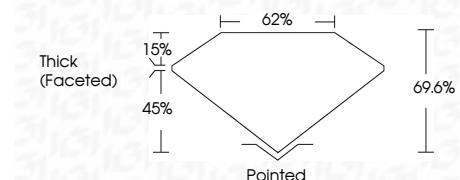
Red symbols indicate internal characteristics.
Green symbols indicate external characteristics.

COLOR

D E F G H I J Faint Very Light Light

CLARITY

FL	IF	VVS ¹⁻²	VS ¹⁻²	SI ¹⁻²	I ¹⁻³
Flawless	Internally Flawless	Very Very Slightly Included	Very Slightly Included	Slightly Included	Included



ADDITIONAL GRADING INFORMATION

Polish **EXCELLENT**
Symmetry **EXCELLENT**
Fluorescence **NONE**
Inscription(s) **IGI LG788619726**
Comments: This Laboratory Grown Diamond was created by Chemical Vapor Deposition (CVD) growth process. Indications of post-growth treatment.



April 9, 2026
IGI Report No **LG788619726**
SQUARE CUSHION MODIFIED BRILLIANT
7.28 X 7.11 X 4.95 MM
Carat Weight **2.50 CARATS**
Color Grade **FANCY INTENSE BLUE**
Clarity Grade **VVS 1**
Depth **69.6%**
Table **62%**
Girdle
Thick (Faceted)
Culet
Polish **Pointed**
Symmetry **EXCELLENT**
Fluorescence **NONE**
Inscription(s) **IGI LG788619726**
Comments: This Laboratory Grown Diamond was created by Chemical Vapor Deposition (CVD) growth process. Indications of post-growth treatment.