



**ELECTRONIC COPY**

LG788619690  
Report verification at igi.org



April 7, 2026

IGI Report Number **LG788619690**

Description **LABORATORY GROWN DIAMOND**

Shape and Cutting Style **ROUND BRILLIANT**

Measurements **8.98 - 9.03 X 5.46 MM**

**GRADING RESULTS**

Carat Weight **2.74 CARATS**

Color Grade **F**

Clarity Grade **VS 1**

Cut Grade **IDEAL**

April 7, 2026  
IGI Report Number **LG788619690**  
Description **LABORATORY GROWN DIAMOND**  
Shape and Cutting Style **ROUND BRILLIANT**  
Measurements **8.98 - 9.03 X 5.46 MM**

**GRADING RESULTS**

Carat Weight **2.74 CARATS**

Color Grade **F**

Clarity Grade **VS 1**

Cut Grade **IDEAL**

**ADDITIONAL GRADING INFORMATION**

Polish **EXCELLENT**

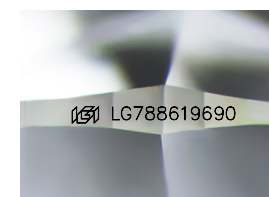
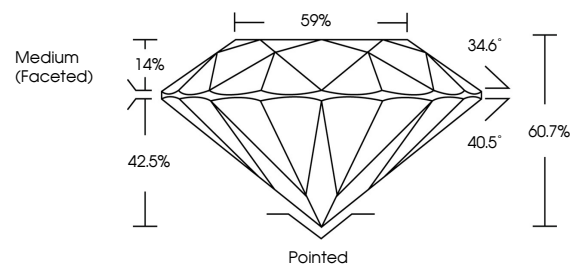
Symmetry **EXCELLENT**

Fluorescence **NONE**

Inscription(s) **LG788619690**

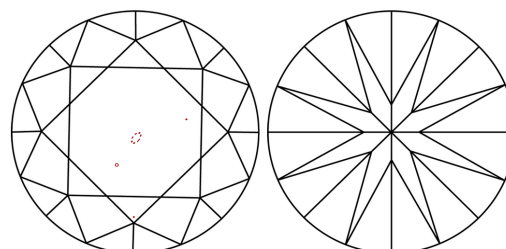
Comments: This Laboratory Grown Diamond was created by Chemical Vapor Deposition (CVD) growth process.  
Type IIa

**PROPORTIONS**



Sample Image Used

**CLARITY CHARACTERISTICS**



**KEY TO SYMBOLS**

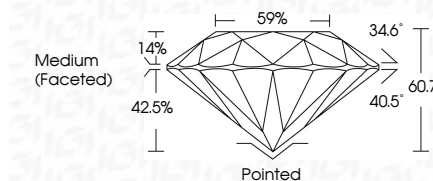
Red symbols indicate internal characteristics.  
Green symbols indicate external characteristics.

**COLOR**

D E F G H I J Faint Very Light Light

**CLARITY**

FL	IF	VS <sup>1-2</sup>	VS <sup>1-2</sup>	SI <sup>1-2</sup>	I <sup>1-3</sup>
Flawless	Internally Flawless	Very Very Slightly Included	Very Slightly Included	Slightly Included	Included



**ADDITIONAL GRADING INFORMATION**

Polish **EXCELLENT**

Symmetry **EXCELLENT**

Fluorescence **NONE**

Inscription(s) **LG788619690**

Comments: This Laboratory Grown Diamond was created by Chemical Vapor Deposition (CVD) growth process.  
Type IIa



**IGI**



April 7, 2026  
IGI Report No LG788619690  
**ROUND BRILLIANT**  
8.98 - 9.03 X 5.46 MM  
2.74 CARATS  
F  
VS 1  
IDEAL  
60.7%  
59%  
Medium (Faceted)Pointed  
EXCELLENT  
EXCELLENT  
NONE  
NONE  
IGI LG788619690  
Comments: This Laboratory Grown Diamond was created by Chemical Vapor Deposition (CVD) growth process.  
Type IIa