



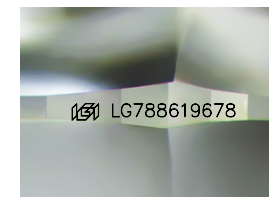
**ELECTRONIC COPY**

LG788619678  
Report verification at igi.org



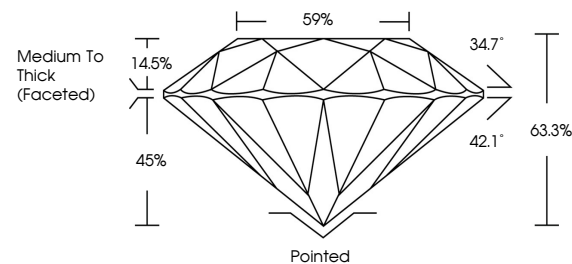
April 7, 2026  
IGI Report Number **LG788619678**  
Description **LABORATORY GROWN DIAMOND**  
Shape and Cutting Style **ROUND BRILLIANT**  
Measurements **6.56 - 6.60 X 4.16 MM**

**GRADING RESULTS**  
Carat Weight **1.12 CARAT**  
Color Grade **F**  
Clarity Grade **VS 1**  
Cut Grade **VERY GOOD**

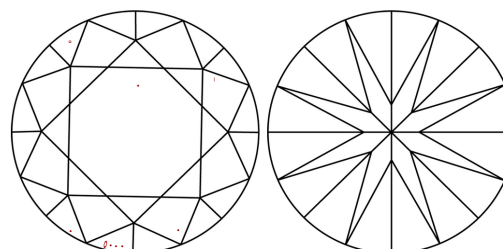


Sample Image Used

**PROPORTIONS**



**CLARITY CHARACTERISTICS**



**KEY TO SYMBOLS**

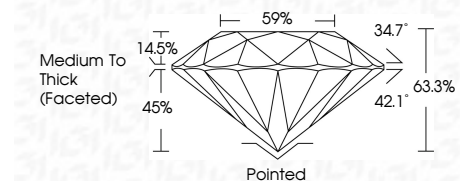
Red symbols indicate internal characteristics.  
Green symbols indicate external characteristics.

**COLOR**

D E F G H I J Faint Very Light Light

**CLARITY**

FL	IF	VS <sup>1-2</sup>	VS <sup>1-2</sup>	SI <sup>1-2</sup>	I <sup>1-3</sup>
Flawless	Internally Flawless	Very Very Slightly Included	Very Slightly Included	Slightly Included	Included



**ADDITIONAL GRADING INFORMATION**

Polish **EXCELLENT**  
Symmetry **EXCELLENT**  
Fluorescence **NONE**  
Inscription(s) **IGI LG788619678**  
Comments: This Laboratory Grown Diamond was created by Chemical Vapor Deposition (CVD) growth process. Type IIa



April 7, 2026  
IGI Report No LG788619678  
**ROUND BRILLIANT**  
6.56 - 6.60 X 4.16 MM  
1.12 CARAT  
F  
Color Grade  
VS 1  
Clarity Grade  
VERY GOOD  
63.3%  
Depth  
59%  
Table  
Medium To Thick (Faceted)  
Girdle  
Pointed  
EXCELLENT  
Polish  
EXCELLENT  
Symmetry  
EXCELLENT  
Fluorescence  
NONE  
Inscription(s)  
IGI LG788619678  
Comments: This Laboratory Grown Diamond was created by Chemical Vapor Deposition (CVD) growth process. Type IIa