



ELECTRONIC COPY

LG788619608
Report verification at igi.org



April 8, 2026

IGI Report Number **LG788619608**

Description **LABORATORY GROWN DIAMOND**

Shape and Cutting Style **ROUND BRILLIANT**

Measurements **8.17 - 8.22 X 5.04 MM**

GRADING RESULTS

Carat Weight **2.06 CARATS**

Color Grade **FANCY BROWN**

Clarity Grade **VVS 2**

Cut Grade **IDEAL**

April 8, 2026

IGI Report Number **LG788619608**

Description **LABORATORY GROWN DIAMOND**

Shape and Cutting Style **ROUND BRILLIANT**

Measurements **8.17 - 8.22 X 5.04 MM**

GRADING RESULTS

Carat Weight **2.06 CARATS**

Color Grade **FANCY BROWN**

Clarity Grade **VVS 2**

Cut Grade **IDEAL**

ADDITIONAL GRADING INFORMATION

Polish **EXCELLENT**

Symmetry **EXCELLENT**

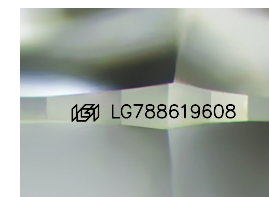
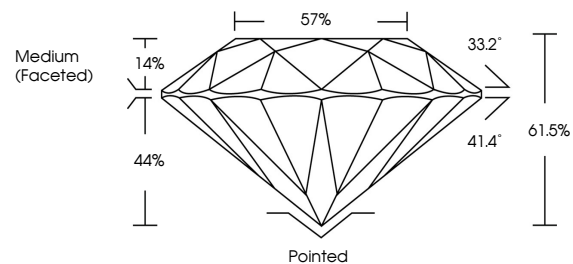
Fluorescence **VERY SLIGHT**

Inscription(s) **LG788619608**

Comments: This Laboratory Grown Diamond was created by Chemical Vapor Deposition (CVD) growth process.

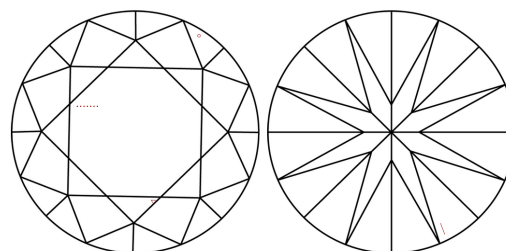
Indications of post-growth treatment.

PROPORTIONS



Sample Image Used

CLARITY CHARACTERISTICS



KEY TO SYMBOLS

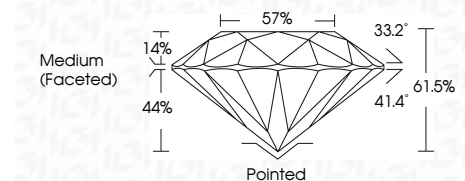
Red symbols indicate internal characteristics.
Green symbols indicate external characteristics.

COLOR

D E F G H I J Faint Very Light Light

CLARITY

FL	IF	VVS ¹⁻²	VS ¹⁻²	SI ¹⁻²	I ¹⁻³
Flawless	Internally Flawless	Very Very Slightly Included	Very Slightly Included	Slightly Included	Included



ADDITIONAL GRADING INFORMATION

Polish **EXCELLENT**

Symmetry **EXCELLENT**

Fluorescence **VERY SLIGHT**

Inscription(s) **LG788619608**

Comments: This Laboratory Grown Diamond was created by Chemical Vapor Deposition (CVD) growth process. Indications of post-growth treatment.



April 8, 2026	2.06 CARATS	Pointed
IGI Report No LG788619608	FANCY BROWN	EXCELLENT
ROUND BRILLIANT	VVS 2	EXCELLENT
8.17 - 8.22 X 5.04 MM	IDEAL	VERY SLIGHT
Carat Weight	61.5%	VERY SLIGHT
Color Grade	57%	VERY SLIGHT
Clarity Grade	Medium (Faceted)	VERY SLIGHT
Cut Grade		VERY SLIGHT
Depth		VERY SLIGHT
Table		VERY SLIGHT
Girdle		VERY SLIGHT
Culet		VERY SLIGHT
Polish		VERY SLIGHT
Symmetry		VERY SLIGHT
Fluorescence		VERY SLIGHT
Inscription(s)		VERY SLIGHT
Comments: This Laboratory Grown Diamond was created by Chemical Vapor Deposition (CVD) growth process. Indications of post-growth treatment.		VERY SLIGHT