



**ELECTRONIC COPY**

LG788619597  
Report verification at igi.org



April 9, 2026

IGI Report Number **LG788619597**

Description **LABORATORY GROWN DIAMOND**

Shape and Cutting Style **ROUND BRILLIANT**

Measurements **8.20 - 8.24 X 4.66 MM**

**GRADING RESULTS**

Carat Weight **2.01 CARATS**

Color Grade **FANCY BROWN**

Clarity Grade **SI 2**

Cut Grade **FAIR**

April 9, 2026

IGI Report Number **LG788619597**

Description **LABORATORY GROWN DIAMOND**

Shape and Cutting Style **ROUND BRILLIANT**

Measurements **8.20 - 8.24 X 4.66 MM**

**GRADING RESULTS**

Carat Weight **2.01 CARATS**

Color Grade **FANCY BROWN**

Clarity Grade **SI 2**

Cut Grade **FAIR**

**ADDITIONAL GRADING INFORMATION**

Polish **VERY GOOD**

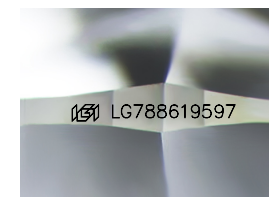
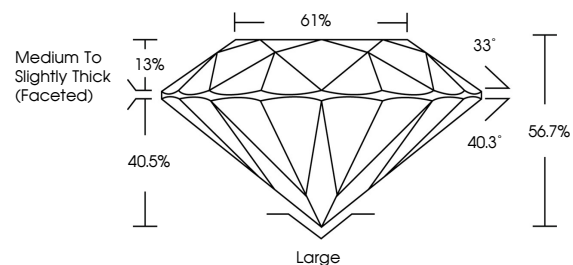
Symmetry **VERY GOOD**

Fluorescence **VERY SLIGHT**

Inscription(s) **LG788619597**

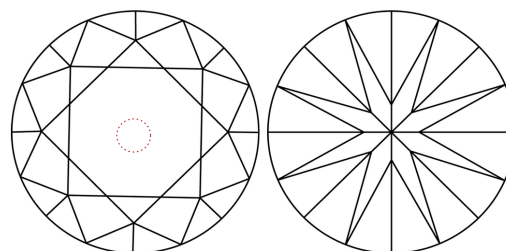
Comments: This Laboratory Grown Diamond was created by Chemical Vapor Deposition (CVD) growth process.

**PROPORTIONS**



Sample Image Used

**CLARITY CHARACTERISTICS**



**KEY TO SYMBOLS**

Red symbols indicate internal characteristics.  
Green symbols indicate external characteristics.

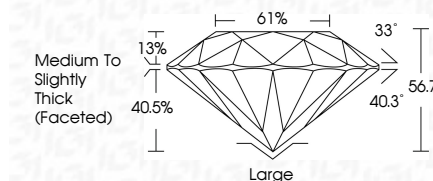
**COLOR**

D E F G H I J Faint Very Light Light

**CLARITY**

FL IF VS<sup>1-2</sup> VS<sup>1-2</sup> SI<sup>1-2</sup> I<sup>1-3</sup>

Flawless Internally Flawless Very Very Slightly Included Very Slightly Included Slightly Included Included



**ADDITIONAL GRADING INFORMATION**

Polish **VERY GOOD**

Symmetry **VERY GOOD**

Fluorescence **VERY SLIGHT**

Inscription(s) **LG788619597**

Comments: This Laboratory Grown Diamond was created by Chemical Vapor Deposition (CVD) growth process.



**IGI**



April 9, 2026  
IGI Report No LG788619597  
ROUND BRILLIANT

8.20 - 8.24 X 4.66 MM

2.01 CARATS  
FANCY BROWN

SI 2  
FAIR

66.7%  
61%

Medium To Slightly Thick (Faceted)

Large  
VERY GOOD  
VERY GOOD  
VERY SLIGHT

igil LG788619597

Comments: This Laboratory Grown Diamond was created by Chemical Vapor Deposition (CVD) growth process.