



ELECTRONIC COPY

LG788615598
Report verification at igi.org



March 31, 2026
IGI Report Number **LG788615598**
Description **LABORATORY GROWN DIAMOND**
Shape and Cutting Style **HEXAGONAL MODIFIED BRILLIANT**
Measurements **12.78 X 6.55 X 4.12 MM**
GRADING RESULTS
Carat Weight **2.05 CARATS**
Color Grade **E**
Clarity Grade **VVS 2**

March 31, 2026
IGI Report Number **LG788615598**
Description **LABORATORY GROWN DIAMOND**
Shape and Cutting Style **HEXAGONAL MODIFIED BRILLIANT**
Measurements **12.78 X 6.55 X 4.12 MM**

GRADING RESULTS

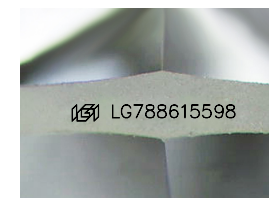
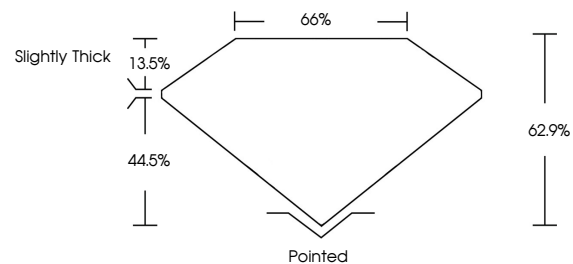
Carat Weight **2.05 CARATS**
Color Grade **E**
Clarity Grade **VVS 2**

ADDITIONAL GRADING INFORMATION

Polish **EXCELLENT**
Symmetry **EXCELLENT**
Fluorescence **NONE**
Inscription(s) **IGI LG788615598**

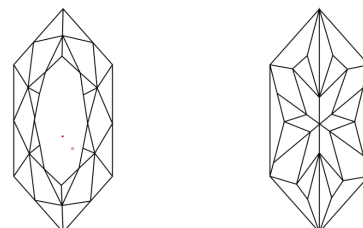
Comments: This Laboratory Grown Diamond was created by Chemical Vapor Deposition (CVD) growth process.
Type IIa

PROPORTIONS



Sample Image Used

CLARITY CHARACTERISTICS



KEY TO SYMBOLS

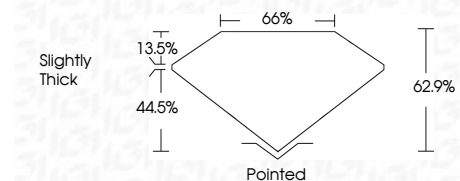
Red symbols indicate internal characteristics.
Green symbols indicate external characteristics.

COLOR

D E F G H I J Faint Very Light Light

CLARITY

FL	IF	VVS ¹⁻²	VS ¹⁻²	SI ¹⁻²	I ¹⁻³
Flawless	Internally Flawless	Very Very Slightly Included	Very Slightly Included	Slightly Included	Included



ADDITIONAL GRADING INFORMATION

Polish **EXCELLENT**
Symmetry **EXCELLENT**
Fluorescence **NONE**
Inscription(s) **IGI LG788615598**
Comments: This Laboratory Grown Diamond was created by Chemical Vapor Deposition (CVD) growth process.
Type IIa



March 31, 2026
IGI Report No LG788615598
HEXAGONAL MODIFIED BRILLIANT
12.78 X 6.55 X 4.12 MM
2.05 CARATS
E
VVS 2
62.9%
65%
Slightly Thick
Pointed
EXCELLENT
EXCELLENT
NONE
IGI LG788615598
Comments: This Laboratory Grown Diamond was created by Chemical Vapor Deposition (CVD) growth process.
Type IIa