



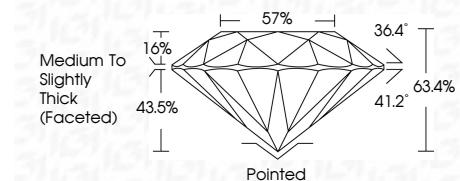
ELECTRONIC COPY

LG788614430 Report verification at igi.org



April 2, 2026 IGI Report Number LG788614430 Description LABORATORY GROWN DIAMOND Shape and Cutting Style ROUND BRILLIANT Measurements 7.22 - 7.28 X 4.60 MM

GRADING RESULTS Carat Weight 1.50 CARAT Color Grade D Clarity Grade VS 1 Cut Grade EXCELLENT



ADDITIONAL GRADING INFORMATION Polish EXCELLENT Symmetry EXCELLENT Fluorescence NONE Inscription(s) LG788614430 Comments: This Laboratory Grown Diamond was created by Chemical Vapor Deposition (CVD) growth process. Type IIa



April 2, 2026 IGI Report No LG788614430 ROUND BRILLIANT 1.50 CARAT D VS 1 EXCELLENT 63.4% 57% Medium To Slightly Thick (Faceted) Pointed EXCELLENT EXCELLENT NONE NONE LG788614430

LABORATORY GROWN DIAMOND REPORT

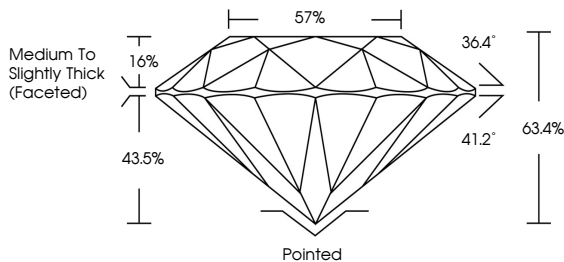
April 2, 2026 IGI Report Number LG788614430 Description LABORATORY GROWN DIAMOND Shape and Cutting Style ROUND BRILLIANT Measurements 7.22 - 7.28 X 4.60 MM

GRADING RESULTS Carat Weight 1.50 CARAT Color Grade D Clarity Grade VS 1 Cut Grade EXCELLENT

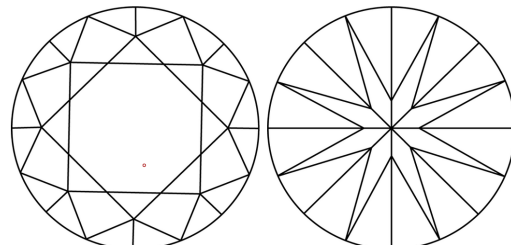
ADDITIONAL GRADING INFORMATION Polish EXCELLENT Symmetry EXCELLENT Fluorescence NONE Inscription(s) LG788614430

Comments: This Laboratory Grown Diamond was created by Chemical Vapor Deposition (CVD) growth process. Type IIa

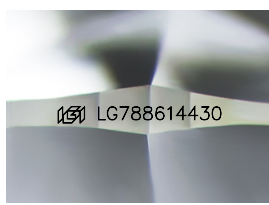
PROPORTIONS



CLARITY CHARACTERISTICS



KEY TO SYMBOLS Red symbols indicate internal characteristics. Green symbols indicate external characteristics.



Sample Image Used

Color scale table with categories D, E, F, G, H, I, J, Faint, Very Light, Light

Clarity scale table with categories FL, IF, VS 1-2, VS 1-2, SI 1-2, I 1-3



THIS DOCUMENT WAS PRODUCED WITH THE FOLLOWING SECURITY MEASURES: SPECIAL DOCUMENT PAPER, INK SCREENS, WATERMARK BACKGROUND DESIGNS, HOLOGRAM AND OTHER SECURITY FEATURES NOT LISTED AND DO EXCEED DOCUMENT SECURITY INDUSTRY GUIDELINES.