



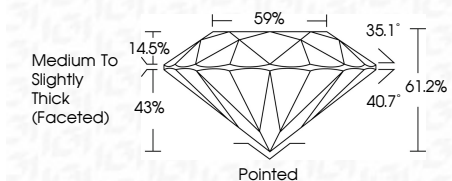
ELECTRONIC COPY

LG788612246 Report verification at igi.org



April 7, 2026 IGI Report Number LG788612246 Description LABORATORY GROWN DIAMOND Shape and Cutting Style ROUND BRILLIANT Measurements 9.78 - 9.84 X 6.00 MM

GRADING RESULTS Carat Weight 3.55 CARATS Color Grade E Clarity Grade VS 2 Cut Grade IDEAL



ADDITIONAL GRADING INFORMATION Polish EXCELLENT Symmetry EXCELLENT Fluorescence NONE Inscription(s) LG788612246 Comments: This Laboratory Grown Diamond was created by Chemical Vapor Deposition (CVD) growth process. Type IIa



April 7, 2026 IGI Report No LG788612246 ROUND BRILLIANT 9.78 - 9.84 X 6.00 MM 3.55 CARATS E VS 2 IDEAL 61.2% 59% Medium To Slightly Thick (Faceted) Pointed EXCELLENT EXCELLENT NONE NONE LG788612246

LABORATORY GROWN DIAMOND REPORT

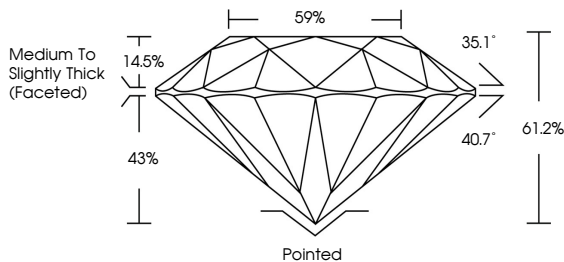
April 7, 2026 IGI Report Number LG788612246 Description LABORATORY GROWN DIAMOND Shape and Cutting Style ROUND BRILLIANT Measurements 9.78 - 9.84 X 6.00 MM

GRADING RESULTS Carat Weight 3.55 CARATS Color Grade E Clarity Grade VS 2 Cut Grade IDEAL

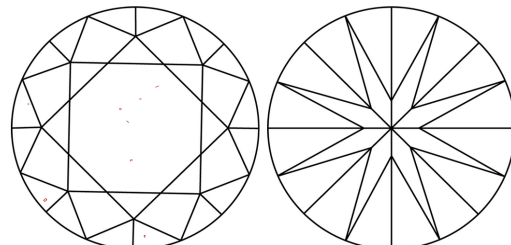
ADDITIONAL GRADING INFORMATION Polish EXCELLENT Symmetry EXCELLENT Fluorescence NONE Inscription(s) LG788612246

Comments: This Laboratory Grown Diamond was created by Chemical Vapor Deposition (CVD) growth process. Type IIa

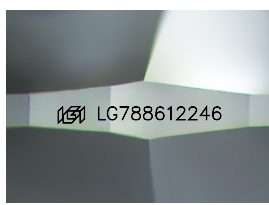
PROPORTIONS



CLARITY CHARACTERISTICS



KEY TO SYMBOLS Red symbols indicate internal characteristics. Green symbols indicate external characteristics.



Sample Image Used

COLOR table with categories D, E, F, G, H, I, J, Faint, Very Light, Light

CLARITY table with categories FL, IF, VS 1-2, VS 1-2, SI 1-2, I 1-3, Flawless, Internally Flawless, Very Very Slightly Included, Very Slightly Included, Slightly Included, Included

