



ELECTRONIC COPY

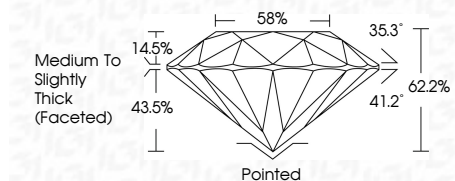
LG788612062
Report verification at igi.org



April 5, 2026
IGI Report Number **LG788612062**
Description **LABORATORY GROWN DIAMOND**
Shape and Cutting Style **ROUND BRILLIANT**
Measurements **8.74 - 8.78 X 5.45 MM**

GRADING RESULTS

Carat Weight **2.58 CARATS**
Color Grade **E**
Clarity Grade **VVS 2**
Cut Grade **IDEAL**



ADDITIONAL GRADING INFORMATION

Polish **EXCELLENT**
Symmetry **EXCELLENT**
Fluorescence **NONE**
Inscription(s) **IGI LG788612062**
Comments: This Laboratory Grown Diamond was created by Chemical Vapor Deposition (CVD) growth process. Type IIa



April 5, 2026
IGI Report No LG788612062
ROUND BRILLIANT
8.74 - 8.78 X 5.45 MM
2.58 CARATS
E
VVS 2
IDEAL
62.2%
58%
Medium To Slightly Thick (Faceted)
Pointed
EXCELLENT
EXCELLENT
NONE
IGI LG788612062
Comments: This Laboratory Grown Diamond was created by Chemical Vapor Deposition (CVD) growth process. Type IIa

April 5, 2026
IGI Report Number **LG788612062**
Description **LABORATORY GROWN DIAMOND**
Shape and Cutting Style **ROUND BRILLIANT**
Measurements **8.74 - 8.78 X 5.45 MM**

GRADING RESULTS

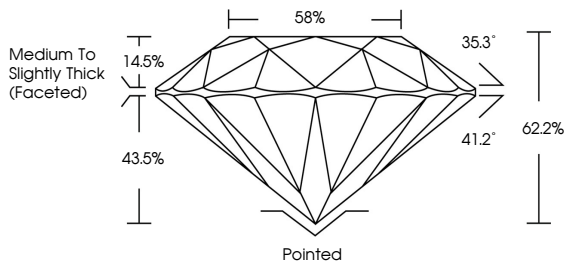
Carat Weight **2.58 CARATS**
Color Grade **E**
Clarity Grade **VVS 2**
Cut Grade **IDEAL**

ADDITIONAL GRADING INFORMATION

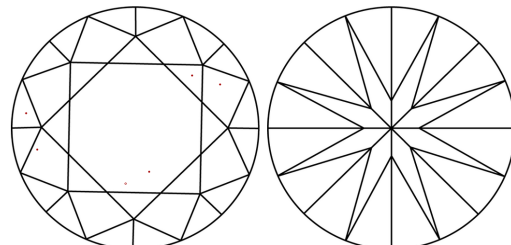
Polish **EXCELLENT**
Symmetry **EXCELLENT**
Fluorescence **NONE**
Inscription(s) **IGI LG788612062**

Comments: This Laboratory Grown Diamond was created by Chemical Vapor Deposition (CVD) growth process. Type IIa

PROPORTIONS

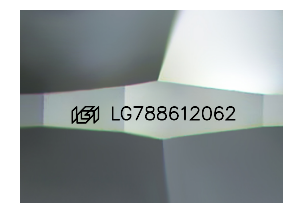


CLARITY CHARACTERISTICS



KEY TO SYMBOLS

Red symbols indicate internal characteristics.
Green symbols indicate external characteristics.



Sample Image Used

COLOR

D E F G H I J Faint Very Light Light

CLARITY

FL IF VVS¹⁻² VS¹⁻² SI¹⁻² I¹⁻³
Flawless Internally Flawless Very Very Slightly Included Very Slightly Included Slightly Included Included

