



April 9, 2026

IGI Report Number LG788611024

PRINCESS CUT

LABORATORY GROWN DIAMOND

4.52 X 4.47 X 2.89 MM

Carat Weight **0.51 CARAT**
Color Grade **FANCY DEEP ORANGE**

Clarity Grade **VS 1**
Polish **VERY GOOD**
Symmetry **VERY GOOD**
Fluorescence **NONE**
Inscription(s) **IGI LG788611024**

Comments: This Laboratory Grown Diamond was created by Chemical Vapor Deposition (CVD) growth process. Indications of post-growth treatment.

LABORATORY GROWN DIAMOND REPORT

April 9, 2026
IGI Report Number **LG788611024**
Description **LABORATORY GROWN DIAMOND**
Shape and Cutting Style **PRINCESS CUT**
Measurements **4.52 X 4.47 X 2.89 MM**

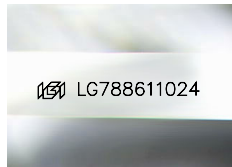
GRADING RESULTS

Carat Weight **0.51 CARAT**
Color Grade **FANCY DEEP ORANGE**
Clarity Grade **VS 1**

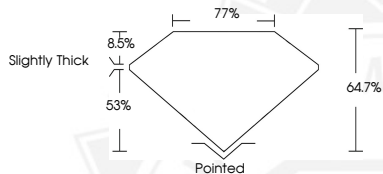
ADDITIONAL GRADING INFORMATION

Polish **VERY GOOD**
Symmetry **VERY GOOD**
Fluorescence **NONE**
Inscription(s) **IGI LG788611024**

Comments: This Laboratory Grown Diamond was created by Chemical Vapor Deposition (CVD) growth process. Indications of post-growth treatment.



Sample Image Used



April 9, 2026

IGI Report Number LG788611024

PRINCESS CUT

LABORATORY GROWN DIAMOND

4.52 X 4.47 X 2.89 MM

Carat Weight **0.51 CARAT**
Color Grade **FANCY DEEP ORANGE**

Clarity Grade **VS 1**
Polish **VERY GOOD**
Symmetry **VERY GOOD**
Fluorescence **NONE**
Inscription(s) **IGI LG788611024**

Comments: This Laboratory Grown Diamond was created by Chemical Vapor Deposition (CVD) growth process. Indications of post-growth treatment.



THIS DOCUMENT WAS PRODUCED WITH THE FOLLOWING SECURITY MEASURES: SPECIAL DOCUMENT PAPER, INK SCREENS, WATERMARK, BACKGROUND DESIGNS, HOLOGRAM AND OTHER SECURITY FEATURES NOT LISTED AND DO EXCEED DOCUMENT SECURITY INDUSTRY GUIDELINES.