



April 1, 2026

**IGI Report Number** LG788607197  
**ROUND BRILLIANT**  
**LABORATORY GROWN DIAMOND**  
**5.92 - 5.97 X 3.62 MM**

Carat Weight	0.78 CARAT
Color Grade	D
Clarity Grade	VVS 1
Cut Grade	IDEAL
Polish	EXCELLENT
Symmetry	EXCELLENT
Fluorescence	NONE
Inscription(s)	IGI LG788607197

Comments: As Grown - No indication of post-growth treatment. This Laboratory Grown Diamond was created by High Pressure High Temperature (HPHT) growth process. Type II

**LABORATORY GROWN DIAMOND REPORT**

April 1, 2026	
IGI Report Number	LG788607197
Description	LABORATORY GROWN DIAMOND
Shape and Cutting Style	ROUND BRILLIANT
Measurements	5.92 - 5.97 X 3.62 MM

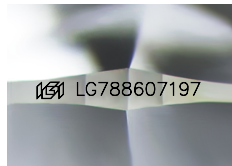
**GRADING RESULTS**

Carat Weight	0.78 CARAT
Color Grade	D
Clarity Grade	VVS 1
Cut Grade	IDEAL

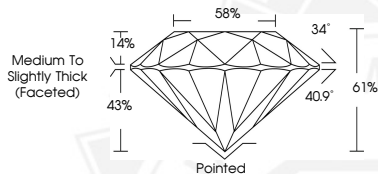
**ADDITIONAL GRADING INFORMATION**

Polish	EXCELLENT
Symmetry	EXCELLENT
Fluorescence	NONE
Inscription(s)	IGI LG788607197

Comments: As Grown - No indication of post-growth treatment. This Laboratory Grown Diamond was created by High Pressure High Temperature (HPHT) growth process. Type II



Sample Image Used



April 1, 2026

**IGI Report Number** LG788607197  
**ROUND BRILLIANT**  
**LABORATORY GROWN DIAMOND**  
**5.92 - 5.97 X 3.62 MM**

Carat Weight	0.78 CARAT
Color Grade	D
Clarity Grade	VVS 1
Cut Grade	IDEAL
Polish	EXCELLENT
Symmetry	EXCELLENT
Fluorescence	NONE
Inscription(s)	IGI LG788607197

Comments: As Grown - No indication of post-growth treatment. This Laboratory Grown Diamond was created by High Pressure High Temperature (HPHT) growth process. Type II

THIS DOCUMENT WAS PRODUCED WITH THE FOLLOWING SECURITY MEASURES: SPECIAL DOCUMENT PAPER, INK SCREENS, WATERMARK, BACKGROUND DESIGNS, HOLOGRAM AND OTHER SECURITY FEATURES NOT LISTED AND DO EXCEED DOCUMENT SECURITY INDUSTRY GUIDELINES.