



ELECTRONIC COPY

LABORATORY GROWN DIAMOND REPORT

April 2, 2026  
IGI Report Number LG787677452  
Description LABORATORY GROWN DIAMOND  
Shape and Cutting Style CUSHION MODIFIED BRILLIANT  
Measurements 10.36 X 7.48 X 5.07 MM

GRADING RESULTS

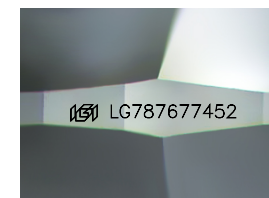
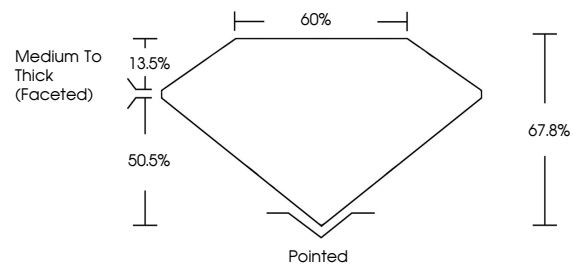
Carat Weight 3.09 CARATS  
Color Grade E  
Clarity Grade VS 1

ADDITIONAL GRADING INFORMATION

Polish EXCELLENT  
Symmetry EXCELLENT  
Fluorescence NONE  
Inscription(s) IGI LG787677452

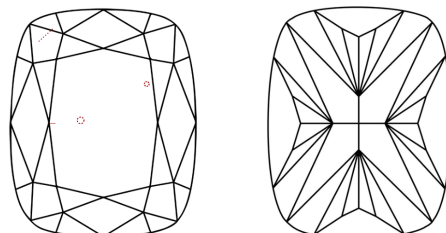
Comments: This Laboratory Grown Diamond was created by Chemical Vapor Deposition (CVD) growth process. Type IIa

PROPORTIONS



Sample Image Used

CLARITY CHARACTERISTICS



KEY TO SYMBOLS

Red symbols indicate internal characteristics.  
Green symbols indicate external characteristics.

COLOR

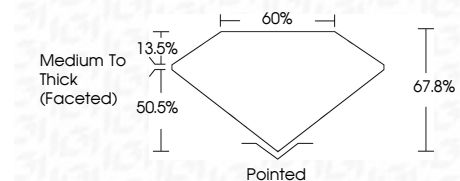
D E F G H I J Faint Very Light Light

CLARITY

FL IF VS 1-2 VS 2-3 SI 1-2 I 1-3  
Flawless Internally Flawless Very Very Slightly Included Very Slightly Included Slightly Included Included



April 2, 2026  
IGI Report Number LG787677452  
Description LABORATORY GROWN DIAMOND  
Shape and Cutting Style CUSHION MODIFIED BRILLIANT  
Measurements 10.36 X 7.48 X 5.07 MM  
GRADING RESULTS  
Carat Weight 3.09 CARATS  
Color Grade E  
Clarity Grade VS 1



ADDITIONAL GRADING INFORMATION

Polish EXCELLENT  
Symmetry EXCELLENT  
Fluorescence NONE  
Inscription(s) IGI LG787677452  
Comments: This Laboratory Grown Diamond was created by Chemical Vapor Deposition (CVD) growth process. Type IIa



IGI



April 2, 2026  
IGI Report No LG787677452  
CUSHION MODIFIED BRILLIANT  
3.09 CARATS E  
Carat Weight 3.09  
Color Grade E  
Clarity Grade VS 1  
Depth 50.5%  
Table 13.5%  
Girdle Medium To Thick (Faceted)  
Culet Pointed  
Polish EXCELLENT  
Symmetry EXCELLENT  
Fluorescence NONE  
Inscription(s) IGI LG787677452  
Comments: This Laboratory Grown Diamond was created by Chemical Vapor Deposition (CVD) growth process. Type IIa