



**ELECTRONIC COPY**

LG787669622  
Report verification at igi.org



May 8, 2026

IGI Report Number **LG787669622**

Description **LABORATORY GROWN DIAMOND**

Shape and Cutting Style **MODIFIED KITE STEP CUT**

Measurements **13.46 X 6.51 X 3.63 MM**

**GRADING RESULTS**

Carat Weight **2.03 CARATS**

Color Grade **F**

Clarity Grade **VVS 2**

May 8, 2026  
IGI Report Number **LG787669622**  
Description **LABORATORY GROWN DIAMOND**  
Shape and Cutting Style **MODIFIED KITE STEP CUT**  
Measurements **13.46 X 6.51 X 3.63 MM**

**GRADING RESULTS**

Carat Weight **2.03 CARATS**

Color Grade **F**

Clarity Grade **VVS 2**

**ADDITIONAL GRADING INFORMATION**

Polish **EXCELLENT**

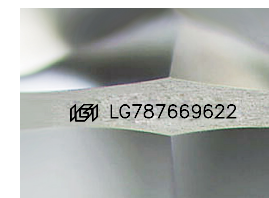
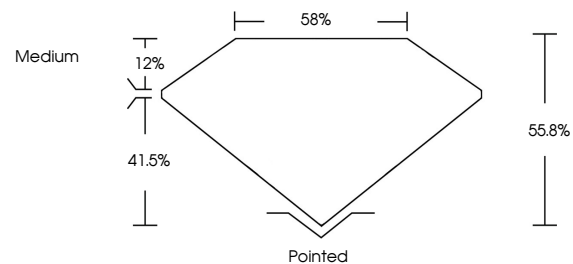
Symmetry **EXCELLENT**

Fluorescence **NONE**

Inscription(s) **IGI LG787669622**

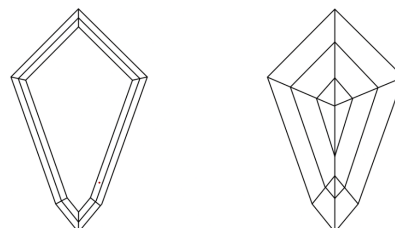
Comments: This Laboratory Grown Diamond was created by Chemical Vapor Deposition (CVD) growth process.  
Type IIa

**PROPORTIONS**



Sample Image Used

**CLARITY CHARACTERISTICS**



**KEY TO SYMBOLS**

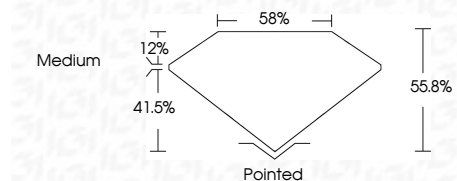
Red symbols indicate internal characteristics.  
Green symbols indicate external characteristics.

**COLOR**

D E F G H I J Faint Very Light Light

**CLARITY**

FL	IF	VVS <sup>1-2</sup>	VS <sup>1-2</sup>	SI <sup>1-2</sup>	I <sup>1-3</sup>
Flawless	Internally Flawless	Very Very Slightly Included	Very Slightly Included	Slightly Included	Included



**ADDITIONAL GRADING INFORMATION**

Polish **EXCELLENT**

Symmetry **EXCELLENT**

Fluorescence **NONE**

Inscription(s) **IGI LG787669622**

Comments: This Laboratory Grown Diamond was created by Chemical Vapor Deposition (CVD) growth process.  
Type IIa



**IGI**



May 8, 2026  
IGI Report No LG787669622  
**MODIFIED KITE STEP CUT**  
13.46 X 6.51 X 3.63 MM  
2.03 CARATS  
Color Grade **F**  
Clarity Grade **VVS 2**  
Depth **55.8%**  
Table **12%**  
Girdle **Medium**  
Culet **Pointed**  
Polish **EXCELLENT**  
Symmetry **EXCELLENT**  
Fluorescence **NONE**  
Inscription(s) **IGI LG787669622**  
Comments: This Laboratory Grown Diamond was created by Chemical Vapor Deposition (CVD) growth process.  
Type IIa