



ELECTRONIC COPY

LG787669594
Report verification at igi.org



May 15, 2026
IGI Report Number **LG787669594**

Description **LABORATORY GROWN DIAMOND**

Shape and Cutting Style **PEAR MODIFIED BRILLIANT**

Measurements **10.25 X 6.17 X 4.21 MM**

GRADING RESULTS

Carat Weight **1.85 CARAT**

Color Grade **FANCY INTENSE YELLOW**

Clarity Grade **VS 1**

May 15, 2026

IGI Report Number **LG787669594**

Description **LABORATORY GROWN DIAMOND**

Shape and Cutting Style **PEAR MODIFIED BRILLIANT**

Measurements **10.25 X 6.17 X 4.21 MM**

GRADING RESULTS

Carat Weight **1.85 CARAT**

Color Grade **FANCY INTENSE YELLOW**

Clarity Grade **VS 1**

ADDITIONAL GRADING INFORMATION

Polish **EXCELLENT**

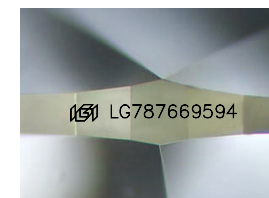
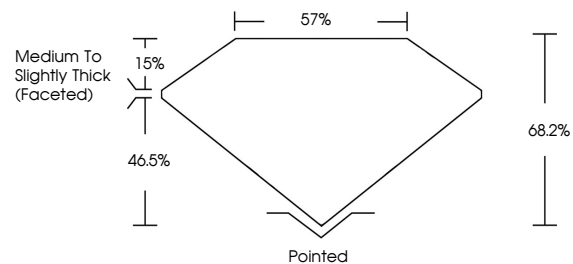
Symmetry **EXCELLENT**

Fluorescence **NONE**

Inscription(s) **IGI LG787669594**

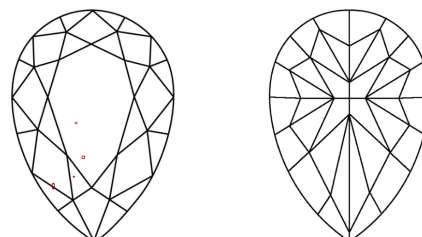
Comments: This Laboratory Grown Diamond was created by Chemical Vapor Deposition (CVD) growth process.

PROPORTIONS



Sample Image Used

CLARITY CHARACTERISTICS



KEY TO SYMBOLS

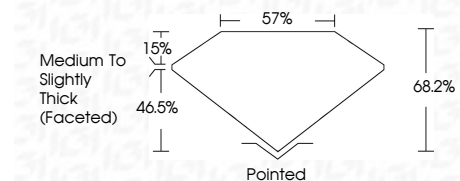
Red symbols indicate internal characteristics.
Green symbols indicate external characteristics.

COLOR

D E F G H I J Faint Very Light Light

CLARITY

FL	IF	VS ¹⁻²	VS ¹⁻²	SI ¹⁻²	I ¹⁻³
Flawless	Internally Flawless	Very Very Slightly Included	Very Slightly Included	Slightly Included	Included



ADDITIONAL GRADING INFORMATION

Polish **EXCELLENT**

Symmetry **EXCELLENT**

Fluorescence **NONE**

Inscription(s) **IGI LG787669594**

Comments: This Laboratory Grown Diamond was created by Chemical Vapor Deposition (CVD) growth process.



May 15, 2026
IGI Report No LG787669594
PEAR MODIFIED BRILLIANT

1.85 CARAT
Carat Weight
Color Grade **FANCY INTENSE YELLOW**
Clarity Grade **VS 1**

10.25 X 6.17 X 4.21 MM
Depth **46.5%**
Table **15%**
Girdle **Medium to Slightly Thick (Faceted)**

Pointed
Culet **EXCELLENT**
Polish **EXCELLENT**
Symmetry **EXCELLENT**
Fluorescence **NONE**
Inscription(s) **IGI LG787669594**

Comments: This Laboratory Grown Diamond was created by Chemical Vapor Deposition (CVD) growth process.