



ELECTRONIC COPY

LG787669585
Report verification at igi.org



May 15, 2026
IGI Report Number **LG787669585**
Description **LABORATORY GROWN DIAMOND**
Shape and Cutting Style **CUT CORNERED
RECTANGULAR MODIFIED
BRILLIANT**
Measurements **10.83 X 8.30 X 5.81 MM**
GRADING RESULTS
Carat Weight **5.02 CARATS**
Color Grade **FANCY INTENSE YELLOW**
Clarity Grade **SI 1**

LABORATORY GROWN DIAMOND REPORT

May 15, 2026
IGI Report Number **LG787669585**
Description **LABORATORY GROWN DIAMOND**
Shape and Cutting Style **CUT CORNERED RECTANGULAR
MODIFIED BRILLIANT**
Measurements **10.83 X 8.30 X 5.81 MM**

GRADING RESULTS

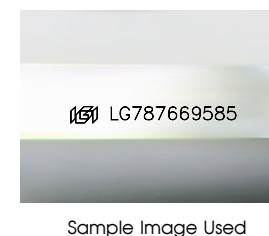
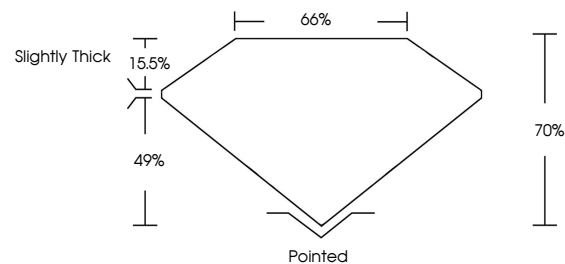
Carat Weight **5.02 CARATS**
Color Grade **FANCY INTENSE YELLOW**
Clarity Grade **SI 1**

ADDITIONAL GRADING INFORMATION

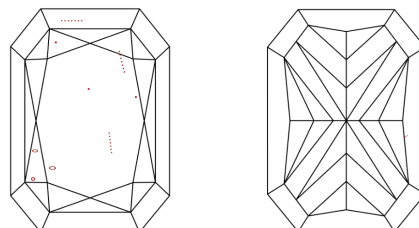
Polish **EXCELLENT**
Symmetry **EXCELLENT**
Fluorescence **NONE**
Inscription(s) **IGI LG787669585**

Comments: This Laboratory Grown Diamond was created by Chemical Vapor Deposition (CVD) growth process.

PROPORTIONS



CLARITY CHARACTERISTICS



KEY TO SYMBOLS

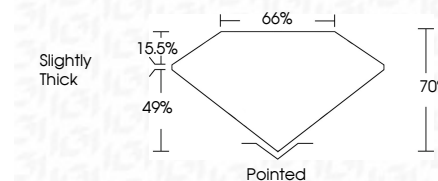
Red symbols indicate internal characteristics.
Green symbols indicate external characteristics.

COLOR

D E F G H I J Faint Very Light Light

CLARITY

FL	IF	VS ¹⁻²	VS ¹⁻²	SI ¹⁻²	I ¹⁻³
Flawless	Internally Flawless	Very Very Slightly Included	Very Slightly Included	Slightly Included	Included



ADDITIONAL GRADING INFORMATION

Polish **EXCELLENT**
Symmetry **EXCELLENT**
Fluorescence **NONE**
Inscription(s) **IGI LG787669585**
Comments: This Laboratory Grown Diamond was created by Chemical Vapor Deposition (CVD) growth process.



May 15, 2026
IGI Report No LG787669585
CUT CORNERED RECT. MODIFIED BRILLIANT
10.83 X 8.30 X 5.81 MM
5.02 CARATS
FANCY INTENSE YELLOW
SI 1
70%
66%
Slightly Thick
Pointed
EXCELLENT
EXCELLENT
NONE
IGI LG787669585
Comments: This Laboratory Grown Diamond was created by Chemical Vapor Deposition (CVD) growth process.