



LABORATORY GROWN DIAMOND REPORT

June 15, 2026
 IGI Report Number **LG787668517**
 Description **LABORATORY GROWN DIAMOND**
 Shape and Cutting Style **OVAL BRILLIANT**
 Measurements **7.11 X 5.00 X 3.18 MM**

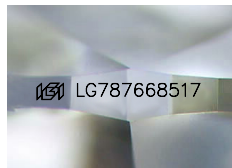
GRADING RESULTS

Carat Weight **0.73 CARAT**
 Color Grade **FANCY VIVID PINK**
 Clarity Grade **VVS 2**

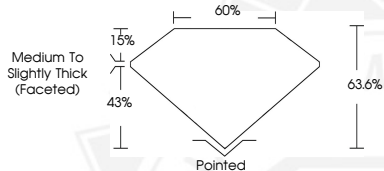
ADDITIONAL GRADING INFORMATION

Polish **VERY GOOD**
 Symmetry **EXCELLENT**
 Fluorescence **SLIGHT**
 Inscription(s) **IGI LG787668517**

Comments: This Laboratory Grown Diamond was created by Chemical Vapor Deposition (CVD) growth process. Indications of post-growth treatment.



Sample Image Used



June 15, 2026
 IGI Report Number **LG787668517**
OVAL BRILLIANT
LABORATORY GROWN DIAMOND
7.11 X 5.00 X 3.18 MM
 Carat Weight **0.73 CARAT**
 Color Grade **FANCY VIVID PINK**
 Clarity Grade **VVS 2**
 Polish **VERY GOOD**
 Symmetry **EXCELLENT**
 Fluorescence **SLIGHT**
 Inscription(s) **IGI LG787668517**

Comments: This Laboratory Grown Diamond was created by Chemical Vapor Deposition (CVD) growth process. Indications of post-growth treatment.



June 15, 2026
 IGI Report Number **LG787668517**
OVAL BRILLIANT
LABORATORY GROWN DIAMOND
7.11 X 5.00 X 3.18 MM
 Carat Weight **0.73 CARAT**
 Color Grade **FANCY VIVID PINK**
 Clarity Grade **VVS 2**
 Polish **VERY GOOD**
 Symmetry **EXCELLENT**
 Fluorescence **SLIGHT**
 Inscription(s) **IGI LG787668517**

Comments: This Laboratory Grown Diamond was created by Chemical Vapor Deposition (CVD) growth process. Indications of post-growth treatment.



THIS DOCUMENT WAS PRODUCED WITH THE FOLLOWING SECURITY MEASURES: SPECIAL DOCUMENT PAPER, INK SCREENS, WATERMARK, BACKGROUND DESIGNS, HOLOGRAM AND OTHER SECURITY FEATURES NOT LISTED AND DO EXCEED DOCUMENT SECURITY INDUSTRY GUIDELINES.