



**ELECTRONIC COPY**

LG787668310  
Report verification at igi.org



May 21, 2026

IGI Report Number **LG787668310**

Description **LABORATORY GROWN DIAMOND**

Shape and Cutting Style **CUT CORNERED  
RECTANGULAR MODIFIED  
BRILLIANT**

Measurements **11.81 X 8.05 X 5.74 MM**

**GRADING RESULTS**

Carat Weight **5.08 CARATS**

Color Grade **FANCY VIVID YELLOW**

Clarity Grade **VS 2**

May 21, 2026

IGI Report Number **LG787668310**

Description **LABORATORY GROWN DIAMOND**

Shape and Cutting Style **CUT CORNERED RECTANGULAR  
MODIFIED BRILLIANT**

Measurements **11.81 X 8.05 X 5.74 MM**

**GRADING RESULTS**

Carat Weight **5.08 CARATS**

Color Grade **FANCY VIVID YELLOW**

Clarity Grade **VS 2**

**ADDITIONAL GRADING INFORMATION**

Polish **EXCELLENT**

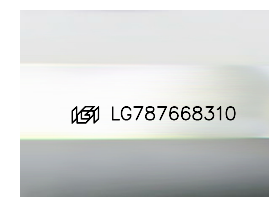
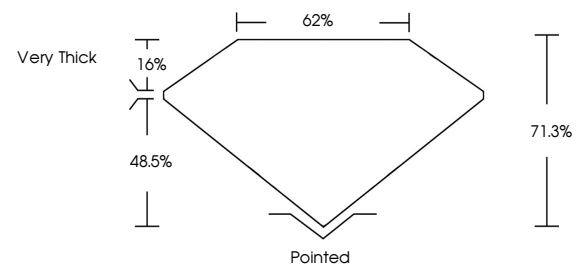
Symmetry **EXCELLENT**

Fluorescence **NONE**

Inscription(s) **IGI LG787668310**

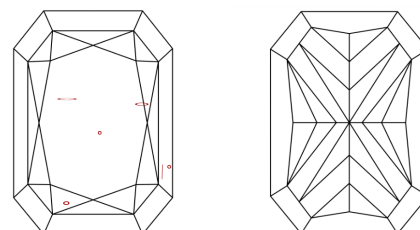
Comments: This Laboratory Grown Diamond was created by Chemical Vapor Deposition (CVD) growth process.

**PROPORTIONS**



Sample Image Used

**CLARITY CHARACTERISTICS**



**KEY TO SYMBOLS**

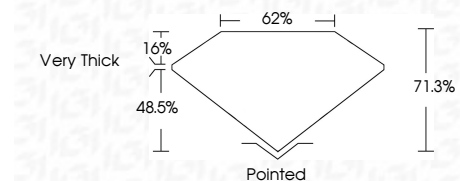
Red symbols indicate internal characteristics.  
Green symbols indicate external characteristics.

**COLOR**

D E F G H I J Faint Very Light Light

**CLARITY**

FL	IF	VS <sup>1-2</sup>	VS <sup>1-2</sup>	SI <sup>1-2</sup>	I <sup>1-3</sup>
Flawless	Internally Flawless	Very Very Slightly Included	Very Slightly Included	Slightly Included	Included



**ADDITIONAL GRADING INFORMATION**

Polish **EXCELLENT**

Symmetry **EXCELLENT**

Fluorescence **NONE**

Inscription(s) **IGI LG787668310**

Comments: This Laboratory Grown Diamond was created by Chemical Vapor Deposition (CVD) growth process.



May 21, 2026  
IGI Report No LG787668310  
CUT CORNERED RECT. MODIFIED BRILLIANT

11.81 X 8.05 X 5.74 MM  
5.08 CARATS  
FANCY VIVID YELLOW  
VS 2  
71.0%  
62%  
Very Thick

Pointed  
EXCELLENT  
EXCELLENT  
NONE  
IGI LG787668310

Comments: This Laboratory Grown Diamond was created by Chemical Vapor Deposition (CVD) growth process.