



**INTERNATIONAL  
GEMOLOGICAL  
INSTITUTE**

**ELECTRONIC COPY**

**LABORATORY GROWN DIAMOND REPORT**

April 29, 2026  
 IGI Report Number **LG787668181**  
 Description **LABORATORY GROWN DIAMOND**  
 Shape and Cutting Style **ROUND MODIFIED BRILLIANT**  
 Measurements **6.00 - 6.03 X 3.70 MM**

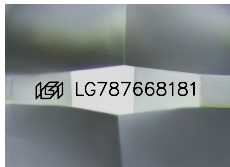
**GRADING RESULTS**

Carat Weight **0.95 CARAT**  
 Color Grade **E**  
 Clarity Grade **VS 1**

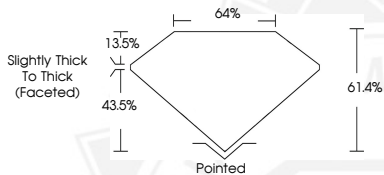
**ADDITIONAL GRADING INFORMATION**

Polish **EXCELLENT**  
 Symmetry **EXCELLENT**  
 Fluorescence **NONE**  
 Inscription(s) **IGI LG787668181**

Comments: This Laboratory Grown Diamond was created by Chemical Vapor Deposition (CVD) growth process. Type IIa



Sample Image Used



April 29, 2026  
 IGI Report Number **LG787668181**  
 ROUND MODIFIED BRILLIANT  
 LABORATORY GROWN DIAMOND  
 6.00 - 6.03 X 3.70 MM  
 Carat Weight **0.95 CARAT**  
 Color Grade **E**  
 Clarity Grade **VS 1**  
 Polish **EXCELLENT**  
 Symmetry **EXCELLENT**  
 Fluorescence **NONE**  
 Inscription(s) **IGI LG787668181**

Comments: This Laboratory Grown Diamond was created by Chemical Vapor Deposition (CVD) growth process. Type IIa



April 29, 2026  
 IGI Report Number **LG787668181**  
 ROUND MODIFIED BRILLIANT  
 LABORATORY GROWN DIAMOND  
 6.00 - 6.03 X 3.70 MM  
 Carat Weight **0.95 CARAT**  
 Color Grade **E**  
 Clarity Grade **VS 1**  
 Polish **EXCELLENT**  
 Symmetry **EXCELLENT**  
 Fluorescence **NONE**  
 Inscription(s) **IGI LG787668181**

Comments: This Laboratory Grown Diamond was created by Chemical Vapor Deposition (CVD) growth process. Type IIa



THIS DOCUMENT WAS PRODUCED WITH THE FOLLOWING SECURITY MEASURES: SPECIAL DOCUMENT PAPER, INK SCREENS, WATERMARK, BACKGROUND DESIGNS, HOLOGRAM AND OTHER SECURITY FEATURES NOT LISTED AND DO EXCEED DOCUMENT SECURITY INDUSTRY GUIDELINES.

For terms & conditions and to verify this report, please visit [www.igi.org](http://www.igi.org)