



ELECTRONIC COPY

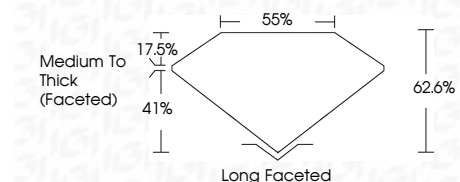
LG787666941
Report verification at igi.org



April 15, 2026
IGI Report Number **LG787666941**
Description **LABORATORY GROWN DIAMOND**
Shape and Cutting Style **CUSHION BRILLIANT**
Measurements **11.40 X 8.32 X 5.21 MM**

GRADING RESULTS

Carat Weight **4.12 CARATS**
Color Grade **U-V**
Clarity Grade **VVS 2**



ADDITIONAL GRADING INFORMATION

Polish **EXCELLENT**
Symmetry **EXCELLENT**
Fluorescence **NONE**
Inscription(s) **IGI LG787666941**
Comments: This Laboratory Grown Diamond was created by Chemical Vapor Deposition (CVD) growth process.
Type IIa
Light Brown



IGI

April 15, 2026
IGI Report No LG787666941
CUSHION BRILLIANT
11.40 X 8.32 X 5.21 MM
4.12 CARATS
U-V
VVS 2
62.6%
85%
Medium To Thick (Faceted)
Long Faceted
EXCELLENT
EXCELLENT
NONE
IGI LG787666941
Comments: This Laboratory Grown Diamond was created by Chemical Vapor Deposition (CVD) growth process.
Type IIa
Light Brown

LABORATORY GROWN DIAMOND REPORT

April 15, 2026
IGI Report Number **LG787666941**
Description **LABORATORY GROWN DIAMOND**
Shape and Cutting Style **CUSHION BRILLIANT**
Measurements **11.40 X 8.32 X 5.21 MM**

GRADING RESULTS

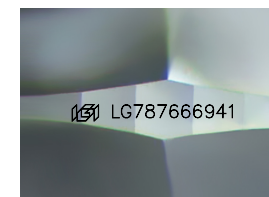
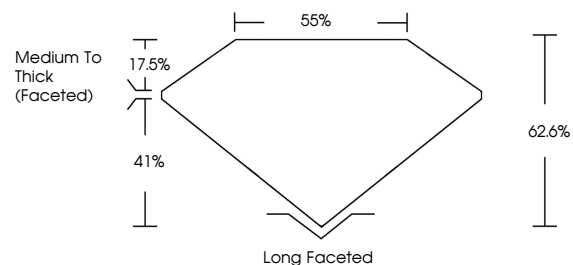
Carat Weight **4.12 CARATS**
Color Grade **U-V**
Clarity Grade **VVS 2**

ADDITIONAL GRADING INFORMATION

Polish **EXCELLENT**
Symmetry **EXCELLENT**
Fluorescence **NONE**
Inscription(s) **IGI LG787666941**

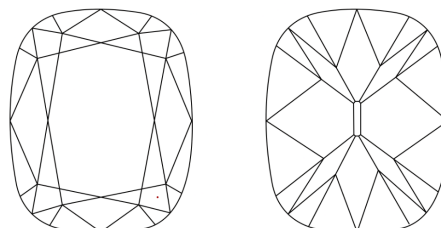
Comments: This Laboratory Grown Diamond was created by Chemical Vapor Deposition (CVD) growth process.
Type IIa
Light Brown

PROPORTIONS



Sample Image Used

CLARITY CHARACTERISTICS



KEY TO SYMBOLS

Red symbols indicate internal characteristics.
Green symbols indicate external characteristics.

COLOR

D E F G H I J Faint Very Light Light

CLARITY

FL	IF	VVS ¹⁻²	VS ¹⁻²	SI ¹⁻²	I ¹⁻³
Flawless	Internally Flawless	Very Very Slightly Included	Very Slightly Included	Slightly Included	Included

