



**ELECTRONIC COPY**

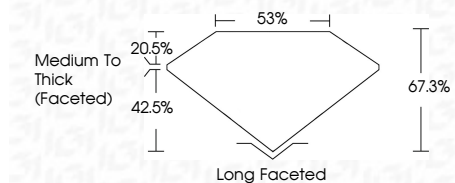
LG787666899  
Report verification at igi.org



April 29, 2026  
IGI Report Number **LG787666899**  
Description **LABORATORY GROWN DIAMOND**  
Shape and Cutting Style **OVAL OLD EUROPEAN CUT**  
Measurements **12.49 X 9.06 X 6.10 MM**

**GRADING RESULTS**

Carat Weight **4.89 CARATS**  
Color Grade **LIGHT BROWN**  
Clarity Grade **VS 1**



**ADDITIONAL GRADING INFORMATION**

Polish **EXCELLENT**  
Symmetry **EXCELLENT**  
Fluorescence **NONE**  
Inscription(s) **IGI LG787666899**  
Comments: This Laboratory Grown Diamond was created by Chemical Vapor Deposition (CVD) growth process. Type IIa



April 29, 2026  
IGI Report No LG787666899  
OVAL OLD EUROPEAN CUT  
12.49 X 9.06 X 6.10 MM  
4.89 CARATS  
LIGHT BROWN  
VS 1  
67.3%  
85%  
Medium To Thick (Faceted)  
Long Faceted  
EXCELLENT  
EXCELLENT  
NONE  
IGI LG787666899  
Comments: This Laboratory Grown Diamond was created by Chemical Vapor Deposition (CVD) growth process. Type IIa

April 29, 2026  
IGI Report Number **LG787666899**  
Description **LABORATORY GROWN DIAMOND**  
Shape and Cutting Style **OVAL OLD EUROPEAN CUT**  
Measurements **12.49 X 9.06 X 6.10 MM**

**GRADING RESULTS**

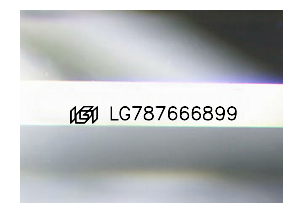
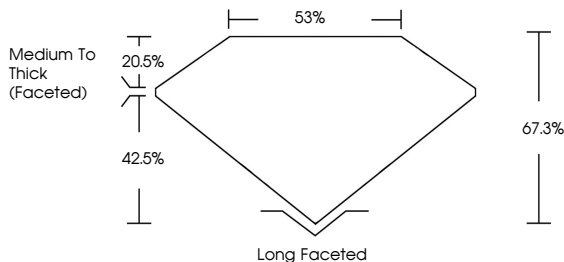
Carat Weight **4.89 CARATS**  
Color Grade **LIGHT BROWN**  
Clarity Grade **VS 1**

**ADDITIONAL GRADING INFORMATION**

Polish **EXCELLENT**  
Symmetry **EXCELLENT**  
Fluorescence **NONE**  
Inscription(s) **IGI LG787666899**

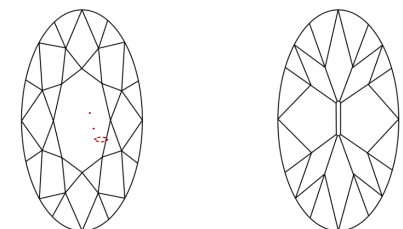
Comments: This Laboratory Grown Diamond was created by Chemical Vapor Deposition (CVD) growth process. Type IIa

**PROPORTIONS**



Sample Image Used

**CLARITY CHARACTERISTICS**



**KEY TO SYMBOLS**

Red symbols indicate internal characteristics.  
Green symbols indicate external characteristics.

**COLOR**

D	E	F	G	H	I	J	Faint	Very Light	Light
---	---	---	---	---	---	---	-------	------------	-------

**CLARITY**

FL	IF	VS <sup>1-2</sup>	VS <sup>1-2</sup>	SI <sup>1-2</sup>	I <sup>1-3</sup>
Flawless	Internally Flawless	Very Very Slightly Included	Very Slightly Included	Slightly Included	Included

