



ELECTRONIC COPY

LG787666798
Report verification at igi.org



May 9, 2026
IGI Report Number **LG787666798**
Description **LABORATORY GROWN DIAMOND**
Shape and Cutting Style **RECTANGULAR CUSHION MIXED CUT**
Measurements **17.41 X 9.11 X 6.00 MM**
GRADING RESULTS
Carat Weight **9.58 CARATS**
Color Grade **FANCY VIVID PINK**
Clarity Grade **VS 1**

LABORATORY GROWN DIAMOND REPORT

May 9, 2026
IGI Report Number **LG787666798**
Description **LABORATORY GROWN DIAMOND**
Shape and Cutting Style **RECTANGULAR CUSHION MIXED CUT**
Measurements **17.41 X 9.11 X 6.00 MM**

GRADING RESULTS

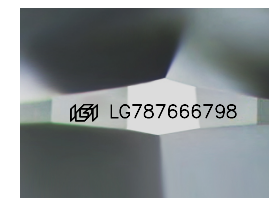
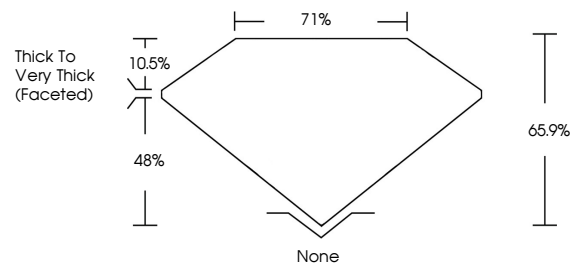
Carat Weight **9.58 CARATS**
Color Grade **FANCY VIVID PINK**
Clarity Grade **VS 1**

ADDITIONAL GRADING INFORMATION

Polish **EXCELLENT**
Symmetry **EXCELLENT**
Fluorescence **SLIGHT**
Inscription(s) **LG787666798**

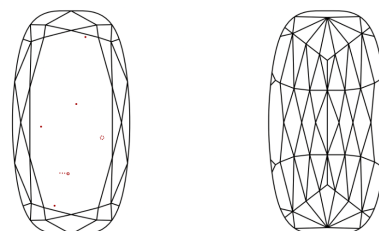
Comments: This Laboratory Grown Diamond was created by Chemical Vapor Deposition (CVD) growth process.
Indications of post-growth treatment.

PROPORTIONS



Sample Image Used

CLARITY CHARACTERISTICS



KEY TO SYMBOLS

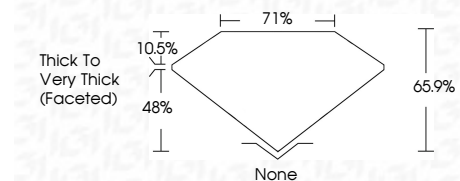
Red symbols indicate internal characteristics.
Green symbols indicate external characteristics.

COLOR

D E F G H I J Faint Very Light Light

CLARITY

FL	IF	VS ¹⁻²	VS ¹⁻²	SI ¹⁻²	I ¹⁻³
Flawless	Internally Flawless	Very Very Slightly Included	Very Slightly Included	Slightly Included	Included



ADDITIONAL GRADING INFORMATION

Polish **EXCELLENT**
Symmetry **EXCELLENT**
Fluorescence **SLIGHT**
Inscription(s) **LG787666798**
Comments: This Laboratory Grown Diamond was created by Chemical Vapor Deposition (CVD) growth process.
Indications of post-growth treatment.



May 9, 2026
IGI Report No LG787666798
RECTANGULAR CUSHION MIXED CUT
17.41 X 9.11 X 6.00 MM
9.58 CARATS
FANCY VIVID PINK
VS 1
65.9%
71%
Thick to Very Thick (Faceted)
None
EXCELLENT
EXCELLENT
SLIGHT
IGI LG787666798
Comments: This Laboratory Grown Diamond was created by Chemical Vapor Deposition (CVD) growth process.
Indications of post-growth treatment.