



**ELECTRONIC COPY**

LG787666771  
Report verification at igi.org



April 30, 2026

IGI Report Number **LG787666771**

Description **LABORATORY GROWN DIAMOND**

Shape and Cutting Style **ROUND ROSE CUT**

Measurements **9.13 - 9.19 X 2.95 MM**

**GRADING RESULTS**

Carat Weight **2.16 CARATS**

Color Grade **FANCY INTENSE PINK**

Clarity Grade **VS 1**

April 30, 2026

IGI Report Number **LG787666771**

Description **LABORATORY GROWN DIAMOND**

Shape and Cutting Style **ROUND ROSE CUT**

Measurements **9.13 - 9.19 X 2.95 MM**

**GRADING RESULTS**

Carat Weight **2.16 CARATS**

Color Grade **FANCY INTENSE PINK**

Clarity Grade **VS 1**

**ADDITIONAL GRADING INFORMATION**

Polish **EXCELLENT**

Symmetry **EXCELLENT**

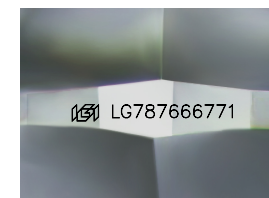
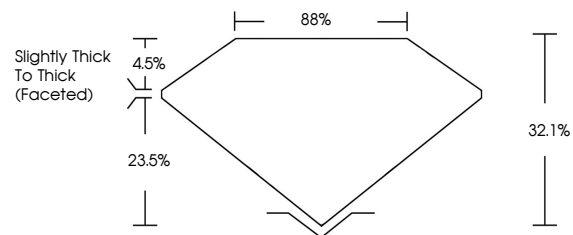
Fluorescence **SLIGHT**

Inscription(s) **IGI LG787666771**

Comments: This Laboratory Grown Diamond was created by Chemical Vapor Deposition (CVD) growth process.

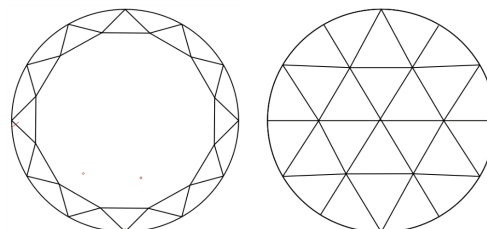
Indications of post-growth treatment.

**PROPORTIONS**



Sample Image Used

**CLARITY CHARACTERISTICS**



**KEY TO SYMBOLS**

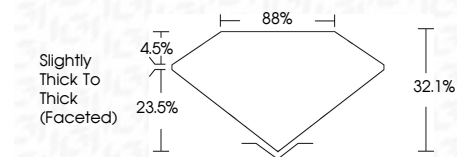
Red symbols indicate internal characteristics.  
Green symbols indicate external characteristics.

**COLOR**

D E F G H I J Faint Very Light Light

**CLARITY**

FL	IF	VS <sup>1-2</sup>	VS <sup>1-2</sup>	SI <sup>1-2</sup>	I <sup>1-3</sup>
Flawless	Internally Flawless	Very Very Slightly Included	Very Slightly Included	Slightly Included	Included



**ADDITIONAL GRADING INFORMATION**

Polish **EXCELLENT**

Symmetry **EXCELLENT**

Fluorescence **SLIGHT**

Inscription(s) **IGI LG787666771**

Comments: This Laboratory Grown Diamond was created by Chemical Vapor Deposition (CVD) growth process. Indications of post-growth treatment.



**IGI**



April 30, 2026  
IGI Report No LG787666771  
ROUND ROSE CUT

9.13 - 9.19 X 2.95 MM  
2.16 CARATS  
FANCY INTENSE PINK  
VS 1  
32.1%  
88%  
Slightly Thick To Thick (Faceted)

EXCELLENT  
EXCELLENT  
SLIGHT  
IGI LG787666771

Comments: This Laboratory Grown Diamond was created by Chemical Vapor Deposition (CVD) growth process. Indications of post-growth treatment.