



ELECTRONIC COPY

LG78766688
Report verification at igi.org



April 21, 2026

IGI Report Number **LG78766688**

Description **LABORATORY GROWN DIAMOND**

Shape and Cutting Style **OLD EUROPEAN CUT**

Measurements **9.22 - 9.28 X 5.68 MM**

GRADING RESULTS

Carat Weight **3.19 CARATS**

Color Grade **E**

Clarity Grade **VS 1**

April 21, 2026

IGI Report Number **LG78766688**

Description **LABORATORY GROWN DIAMOND**

Shape and Cutting Style **OLD EUROPEAN CUT**

Measurements **9.22 - 9.28 X 5.68 MM**

GRADING RESULTS

Carat Weight **3.19 CARATS**

Color Grade **E**

Clarity Grade **VS 1**

ADDITIONAL GRADING INFORMATION

Polish **EXCELLENT**

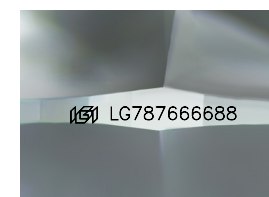
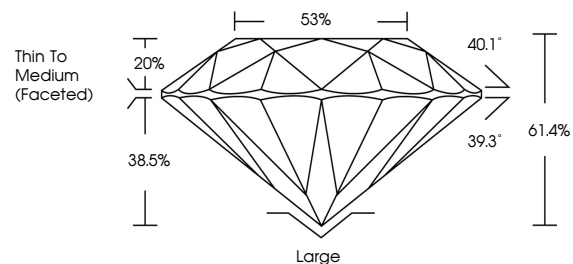
Symmetry **EXCELLENT**

Fluorescence **NONE**

Inscription(s) **IGI LG78766688**

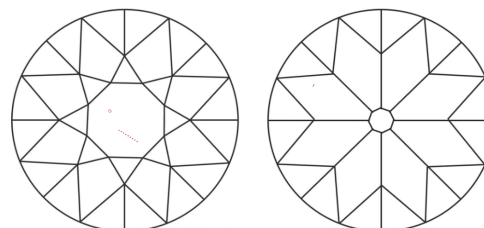
Comments: This Laboratory Grown Diamond was created by Chemical Vapor Deposition (CVD) growth process. Type IIa

PROPORTIONS



Sample Image Used

CLARITY CHARACTERISTICS



KEY TO SYMBOLS

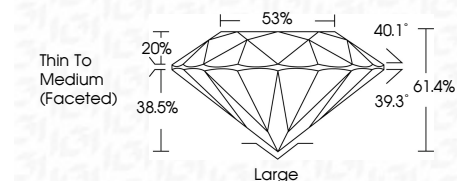
Red symbols indicate internal characteristics.
Green symbols indicate external characteristics.

COLOR

D E F G H I J Faint Very Light Light

CLARITY

FL	IF	VS ¹⁻²	VS ¹⁻²	SI ¹⁻²	I ¹⁻³
Flawless	Internally Flawless	Very Very Slightly Included	Very Slightly Included	Slightly Included	Included



ADDITIONAL GRADING INFORMATION

Polish **EXCELLENT**

Symmetry **EXCELLENT**

Fluorescence **NONE**

Inscription(s) **IGI LG78766688**

Comments: This Laboratory Grown Diamond was created by Chemical Vapor Deposition (CVD) growth process. Type IIa



April 21, 2026
IGI Report No LG78766688
OLD EUROPEAN CUT
3.19 CARATS
E
3.19 CARATS
E
VS 1
61.4%
38.5%
Thin To Medium (Faceted)
Large
EXCELLENT
EXCELLENT
NONE
IGI LG78766688

Comments: This Laboratory Grown Diamond was created by Chemical Vapor Deposition (CVD) growth process. Type IIa