



LABORATORY GROWN DIAMOND REPORT

April 28, 2026
 IGI Report Number **LG787666630**
 Description **LABORATORY GROWN DIAMOND**
 Shape and Cutting Style **OLD EUROPEAN CUT**
 Measurements **5.93 - 5.96 X 3.59 MM**

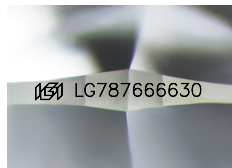
GRADING RESULTS

Carat Weight **0.83 CARAT**
 Color Grade **LIGHT BROWN**
 Clarity Grade **VVS 2**

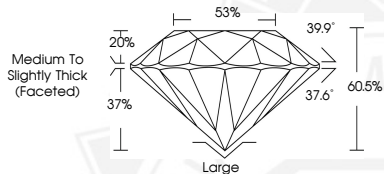
ADDITIONAL GRADING INFORMATION

Polish **EXCELLENT**
 Symmetry **EXCELLENT**
 Fluorescence **NONE**
 Inscription(s) **IGI LG787666630**

Comments: This Laboratory Grown Diamond was created by
 Chemical Vapor Deposition (CVD) growth process.
 Indications of post-growth treatment.



Sample Image Used



April 28, 2026
 IGI Report Number **LG787666630**
 OLD EUROPEAN CUT
 LABORATORY GROWN DIAMOND
 5.93 - 5.96 X 3.59 MM
 Carat Weight **0.83 CARAT**
 Color Grade **LIGHT BROWN**
 Clarity Grade **VVS 2**
 Polish **EXCELLENT**
 Symmetry **EXCELLENT**
 Fluorescence **NONE**
 Inscription(s) **IGI LG787666630**

Comments: This Laboratory Grown
 Diamond was created by
 Chemical Vapor Deposition (CVD)
 growth process. Indications of
 post-growth treatment.



April 28, 2026
 IGI Report Number **LG787666630**
 OLD EUROPEAN CUT
 LABORATORY GROWN DIAMOND
 5.93 - 5.96 X 3.59 MM
 Carat Weight **0.83 CARAT**
 Color Grade **LIGHT BROWN**
 Clarity Grade **VVS 2**
 Polish **EXCELLENT**
 Symmetry **EXCELLENT**
 Fluorescence **NONE**
 Inscription(s) **IGI LG787666630**

Comments: This Laboratory Grown
 Diamond was created by
 Chemical Vapor Deposition (CVD)
 growth process. Indications of
 post-growth treatment.



THIS DOCUMENT WAS PRODUCED WITH THE FOLLOWING SECURITY MEASURES: SPECIAL DOCUMENT PAPER, INK SCREENS, WATERMARK, BACKGROUND DESIGNS, HOLOGRAM AND OTHER SECURITY FEATURES NOT LISTED AND DO EXCEED DOCUMENT SECURITY INDUSTRY GUIDELINES.