



ELECTRONIC COPY

LG78766621
Report verification at igi.org



May 2, 2026

IGI Report Number **LG78766621**

Description **LABORATORY GROWN DIAMOND**

Shape and Cutting Style **ROUND BRILLIANT**

Measurements **9.35 - 9.40 X 5.82 MM**

GRADING RESULTS

Carat Weight **3.19 CARATS**

Color Grade **FANCY BROWNISH YELLOW**

Clarity Grade **VVS 2**

Cut Grade **IDEAL**

May 2, 2026

IGI Report Number **LG78766621**

Description **LABORATORY GROWN DIAMOND**

Shape and Cutting Style **ROUND BRILLIANT**

Measurements **9.35 - 9.40 X 5.82 MM**

GRADING RESULTS

Carat Weight **3.19 CARATS**

Color Grade **FANCY BROWNISH YELLOW**

Clarity Grade **VVS 2**

Cut Grade **IDEAL**

ADDITIONAL GRADING INFORMATION

Polish **EXCELLENT**

Symmetry **EXCELLENT**

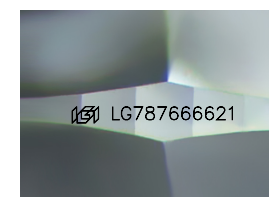
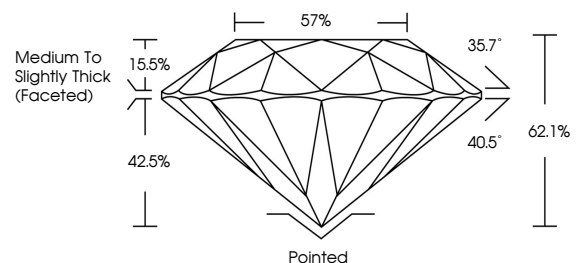
Fluorescence **SLIGHT**

Inscription(s) **LG78766621**

Comments: This Laboratory Grown Diamond was created by Chemical Vapor Deposition (CVD) growth process.

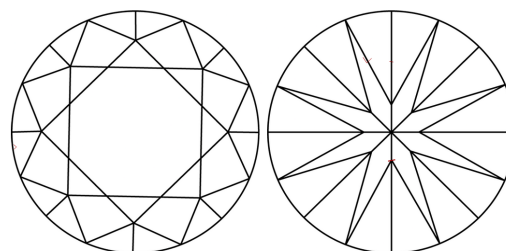
Indications of post-growth treatment.

PROPORTIONS



Sample Image Used

CLARITY CHARACTERISTICS



KEY TO SYMBOLS

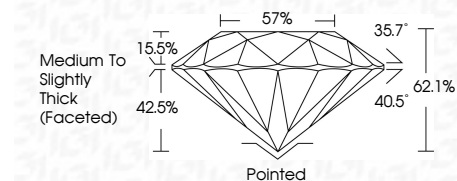
Red symbols indicate internal characteristics.
Green symbols indicate external characteristics.

COLOR

D E F G H I J Faint Very Light Light

CLARITY

FL	IF	VVS ¹⁻²	VS ¹⁻²	SI ¹⁻²	I ¹⁻³
Flawless	Internally Flawless	Very Very Slightly Included	Very Slightly Included	Slightly Included	Included



ADDITIONAL GRADING INFORMATION

Polish **EXCELLENT**

Symmetry **EXCELLENT**

Fluorescence **SLIGHT**

Inscription(s) **LG78766621**

Comments: This Laboratory Grown Diamond was created by Chemical Vapor Deposition (CVD) growth process. Indications of post-growth treatment.



May 2, 2026
IGI Report No LG78766621
ROUND BRILLIANT

3.19 CARATS
Carat Weight
FANCY BROWNISH YELLOW
Color Grade
VVS 2
Clarity Grade
IDEAL
Cut Grade
Depth 62.1%
Table 15.5%
Girdle 42.5%
Medium To Slightly Thick (Faceted)

Pointed
EXCELLENT
EXCELLENT
SLIGHT
SLIGHT
Inscriptions(s) LG78766621

Comments: This Laboratory Grown Diamond was created by Chemical Vapor Deposition (CVD) growth process. Indications of post-growth treatment.