



ELECTRONIC COPY

LG78766618
Report verification at igi.org



May 2, 2026

IGI Report Number **LG78766618**

Description **LABORATORY GROWN DIAMOND**

Shape and Cutting Style **ROUND BRILLIANT**

Measurements **8.24 - 8.25 X 5.08 MM**

GRADING RESULTS

Carat Weight **2.15 CARATS**

Color Grade **FANCY INTENSE BROWNISH
YELLOW**

Clarity Grade **VVS 2**

Cut Grade **IDEAL**

May 2, 2026

IGI Report Number **LG78766618**

Description **LABORATORY GROWN DIAMOND**

Shape and Cutting Style **ROUND BRILLIANT**

Measurements **8.24 - 8.25 X 5.08 MM**

GRADING RESULTS

Carat Weight **2.15 CARATS**

Color Grade **FANCY INTENSE BROWNISH
YELLOW**

Clarity Grade **VVS 2**

Cut Grade **IDEAL**

ADDITIONAL GRADING INFORMATION

Polish **EXCELLENT**

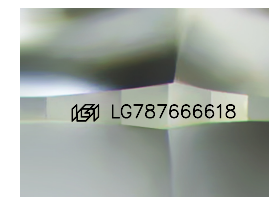
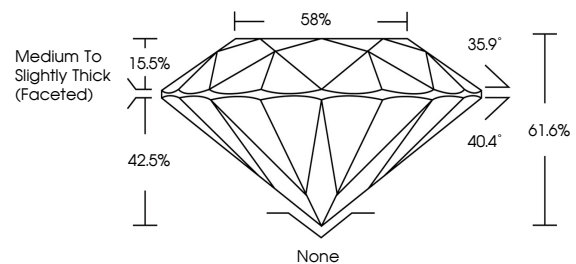
Symmetry **EXCELLENT**

Fluorescence **VERY SLIGHT**

Inscription(s) **IGI LG78766618**

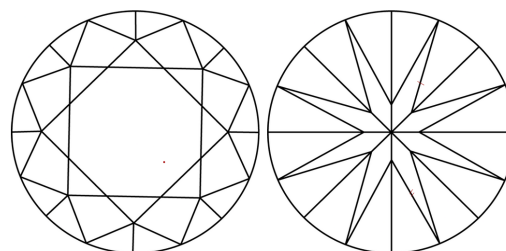
Comments: This Laboratory Grown Diamond was created by Chemical Vapor Deposition (CVD) growth process.
Indications of post-growth treatment.

PROPORTIONS



Sample Image Used

CLARITY CHARACTERISTICS



KEY TO SYMBOLS

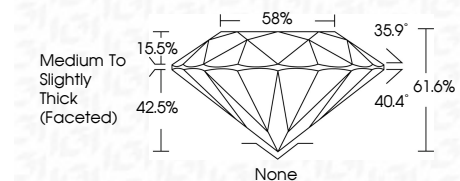
Red symbols indicate internal characteristics.
Green symbols indicate external characteristics.

COLOR

D E F G H I J Faint Very Light Light

CLARITY

FL	IF	VVS ¹⁻²	VS ¹⁻²	SI ¹⁻²	I ¹⁻³
Flawless	Internally Flawless	Very Very Slightly Included	Very Slightly Included	Slightly Included	Included



ADDITIONAL GRADING INFORMATION

Polish **EXCELLENT**

Symmetry **EXCELLENT**

Fluorescence **VERY SLIGHT**

Inscription(s) **IGI LG78766618**

Comments: This Laboratory Grown Diamond was created by Chemical Vapor Deposition (CVD) growth process.
Indications of post-growth treatment.



May 2, 2026
IGI Report No LG78766618
ROUND BRILLIANT
8.24 - 8.25 X 5.08 MM
2.15 CARATS
FANCY INTENSE BROWNISH YELLOW
Color Grade
VVS 2
IDEAL
Depth 61.6%
Table 15.5%
Medium To Slightly Thick (Faceted)
None
EXCELLENT
EXCELLENT
VERY SLIGHT
IGI LG78766618
Comments: This Laboratory Grown Diamond was created by Chemical Vapor Deposition (CVD) growth process.
Indications of post-growth treatment.